

WHAT EVERY VINTNER DESERVES

A vineyard tasting room gets a very special interior treatment with cathedral spaces and an overlook with railing and stairs. But the exterior is perfect, too, with stained siding, pine, cedar and copper accents as worthy of appreciation as a fine Bordeaux.



BUILD INSTALL INSPIRE

FALL/WINTER 2016-2017

JDM STRUCTURES

BUILD, INSTALL, INSPIRE

BARNs BY JDM STRUCTURES

FALL/WINTER 2016-2017

FAVORITE BARNs 45 BEST-OF-SHOW DESIGNS

'SECRET GARDEN' SHEDS TO ADORE
A MAGICAL COTTAGE CLASSROOM
BLISSFUL BACKYARD GETAWAYS

PLUS 4 WAYS A GARAGE CAN BE MORE



LIFE AT THE FULLEST

It's amazing what you can store in a small barn, and it's equally amazing how one small structure can inspire a new lease on life, whether it's a hideout by the river, the garden shed or garage you have always wanted, a playhouse, workshop, guesthouse, office or studio. Or a traditional barn, reimagined for the 21st Century. The best part is that today, barn-building is faster, better and cheaper, so it's easier than ever to be part of this wonderful tradition.

HORIZON, 10'x14'. One of this year's best sits high on a hillside overlooking pristine whitewater, serving as part changing room, part camp kitchen, part boathouse and fulltime secret hideout. Hand-peeled cedar posts coordinate effortlessly with Pine cove siding, Trail Cedarwood stain, Brown shingles, Craftsman Stall doors, 28"x29" wood windows, cedar flower boxes and large wood vents.

GOOD. BETTER. BEST.



NEW ENGLAND. NOW, THAT'S GOOD!

Our "Good" New England Models beat what's widely sold as best. They are strong, green and long-lasting, with keyed latches and piano hinges. Our very popular Catskill barns are big, unpainted and available with only eight options. For workhorse construction, lots of space and no-nonsense style, it's Catskill.

SIGNATURE & KIDZSPACE. BETTER AND BETTER IN EVERY WAY.

Signature comes in 15 models built with the most popular features: steep roof pitches, 6-inch fascia, 30-year dimensional shingles, many sizes, upgrades and models available. If you have a pint-sized family member, don't miss KidzSpace - 4 playhouse models, built much like Signature and with many imaginative paint choices available.



HUDSON BAY CUSTOM. SIMPLY THE BEST.

With Hudson Bay Custom, the sky's the limit. Start with a custom model and choose from an almost endless selection of special materials and exquisite details, or work with us for whatever suits your needs - super-large sizes, garages, cottages, even custom homes!



CURIOUS ABOUT WHAT'S MOST POPULAR?

It's our Aurora and Skyline barns. The most popular upgrades are additional windows, upgraded doors, lofts, workbenches and paint accents.

ONE DAY ON A TRUCK, AND THIS BARN IS IN YOUR YARD AND READY FOR WORK.

In nothing but a primer coat, and only 8 upgrades available, Catskill barns are built for economy, strength and simplicity. Fully portable, so they're ready to get to work fast.



WORKHORSE CONSTRUCTION. NO-NONSENSE STYLE.

★ CATSKILL. ★

CONTENTS

BUILD, INSTALL, INSPIRE Fall/Winter 2016-2017



14

Features

12 IT'S TIME TO LOOK UP
Whether it's Hanover's deeper pitch or Mystic's gambrel roof, the advantage is overhead.

14 THE NEW BARNYARD
Farming reimaged to pass the joys and possibilities of country living on to a new generation.

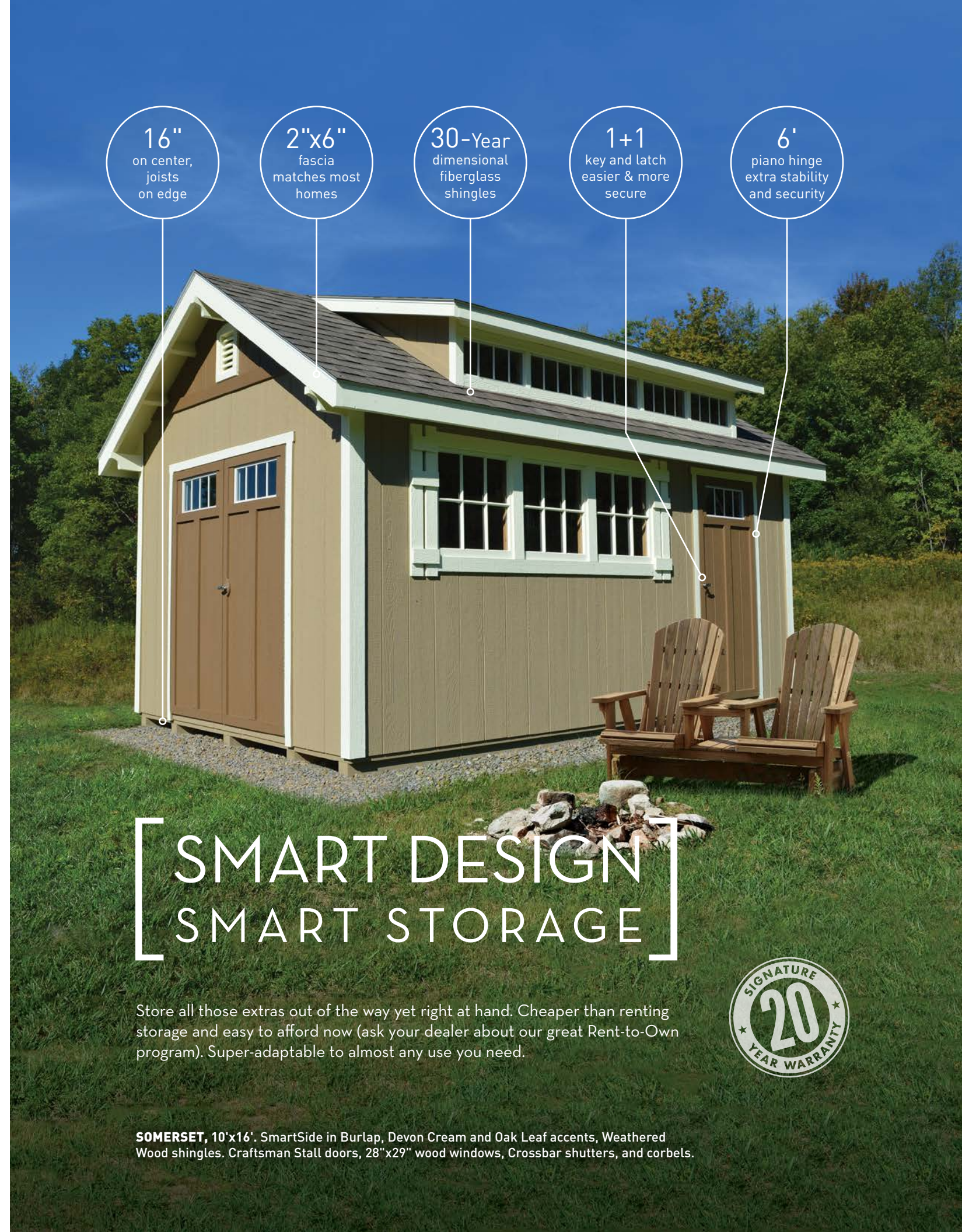
21 SECRET GARDEN SHEDS
There's nothing like a secluded spot in your own garden, and now it's easier than ever to create.

24 ONE-ROOM SCHOOLHOUSE
Chef/teacher Kathy Lehr uses her barn as a very special classroom.

47 IMAGINATION MOMENTS
Playhouses that inspire any child to flights of imagination.



BACK COVER:
SKYLINE, 20'x24'. Driftwood stain on SmartSide siding, 8' sidewalls, Weathered Wood shingles, Crossback and Cottage Crossback pine doors with Trail Bronze stain, 28"x29" wood windows, decorative hinges, custom pent roof overhang with copper standing seam steel roofing and 36" heavy-duty braces, corbels, and custom extra-large coppertop louvered cupola.



16"
on center,
joists
on edge

2"x6"
fascia
matches most
homes

30-Year
dimensional
fiberglass
shingles

1+1
key and latch
easier & more
secure

6'
piano hinge
extra stability
and security

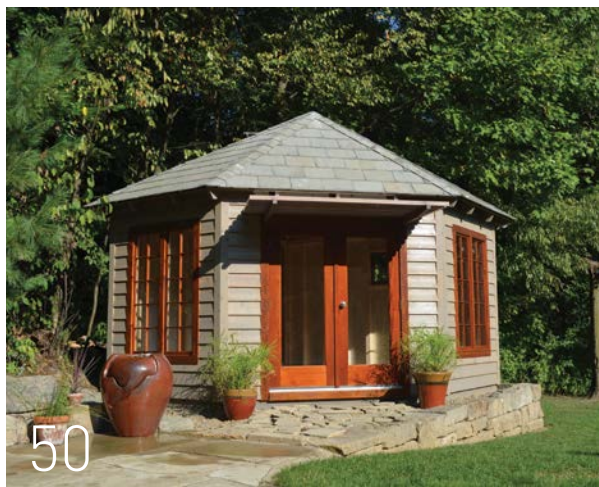
**SMART DESIGN
SMART STORAGE**

Store all those extras out of the way yet right at hand. Cheaper than renting storage and easy to afford now (ask your dealer about our great Rent-to-Own program). Super-adaptable to almost any use you need.



SOMERSET, 10'x16'. SmartSide in Burlap, Devon Cream and Oak Leaf accents, Weathered Wood shingles. Craftsman Stall doors, 28"x29" wood windows, Crossbar shutters, and corbels.

CONTENTS



Departments

36 ADD BARN AND STIR

A spacious outdoor kitchen with windows up high helps you serve a crowd, outdoors or in.

40 PLAYHOUSE CAFÉ

Clever parents split a Lexington and turned it into a delightful playhouse.

50 ARCHITECTURAL EXCELLENCE

When only the best will do, explore our highly articulated Hudson Bay Custom models.

54 THE SUPER-GARAGE

Fit a garage out to perfection and you have a whole new experience.

62 TODAY'S PALETTE

23 hues, 9 brights and 8 stains selected by an artist. It's hard to go wrong!

66 LAST BRUSHSTROKE

LP's Leigh Smith explains how treated and engineered wood has revolutionized building.

67 STANDARDS

Your guide to specs in three series: New England, Signature and KidzSpace.

BUILD, INSTALL, INSPIRE

Fall/Winter Issue, 2016-2017



Kleidon Publishing

Editor Rose Kleidon

Art Director Tim Klinger

Production Manager Dennis Kleidon

www.kleidon.com

Volume 2 Number 2

litbarns0716

©2016 JDM. All rights reserved.

Reproduction without permission is prohibited.

Printing does not allow for absolutely accurate hue representation. See your dealer for actual samples.

A POWERFUL BARN? YOU BETCHA!

CHECK OUT 3 IMPORTANT DIFFERENCES: A SECURE DOOR,
STRONG FLOOR AND BEEFY FASCIA.

OUR EXCLUSIVE SIX-FOOT PIANO HINGE spreads the weight of the door along its full length for life-long smooth operation. And it strong-arms anyone who thinks he will "just take the hinges off." Why think about a hinge? Because it's a weak point on many barns. Not ours.



OUR ENGINEERED WOOD FLOOR IS SHOCKINGLY STRONG.

Don't be taken in by the look of thick plank floors. In a floor, it's strength you want, not weight. Our standard LP SmartFloor in a 10'x20' barn has a 40,000-pound live load rating – about 5 times that of typical housing code requirements. Plus world-class resistance to moisture, termites and fungus. For strength that lasts.

OUR 6" FASCIA LOOKS RIGHT because it matches most houses. Some builders offer a 6" fascia at extra cost, but it's standard on our Signature barns. Now your robust, durable, tough barn looks the way it should – powerful.

DO YOU EXPECT A BARN TO HOLD HEAVY STUFF, CLOSE UP TIGHT AND LOOK GOOD DOING IT? YOU'VE COME TO THE RIGHT PLACE.

I

Inside a slum on the outskirts of Port au Prince, Haiti,

on 12 January 2010, a young family was gathering at home from work and school when it struck: a catastrophic magnitude 7.0 earthquake. Later they would consider themselves lucky to have survived when so many did not and so many more were left homeless. Later still, when aid workers helped them to settle in a temporary new “village” of our barns, they were again among the lucky ones.



After the earthquake, aid poured in from around the world, and among the many efforts to help were more than two hundred structures that Haitian Relief shipped as kits that people could assemble for emergency housing. LP Corp participated in providing treated building materials, an essential element where termites are an ongoing problem.

The cabins we sent to Haiti are very small and very basic, but they are a huge improvement for people whose housing alternative is plastic sheeting or a cardboard box. To see more about this important effort and support the volunteers who continue to work in Haiti, visit www.haiticabins.com, and be sure to click on ‘Photos and Progress.’

Over the years we have explored a wide range of residential buildings, crossing over from barns and garages to cottages and full-blown custom homes, challenging ourselves to build for special situations, including remote locations like Haiti.

When we think about taking care of our families here, one way is to make our homes as home-like as we can, and sometimes a barn is exactly the right solution. Whether your plans are as simple as the ‘Secret Garden Shed’ on page 21 or as complex as the guest/pool house on page 58, I hope you’ll be inspired by the stories in this issue, our latest collection of beautiful backyard structures.



Rose Kleidon
 Rose Kleidon, Editor
 Kleidon Publishing

BUILD BETTER

Inside And Out

ROOF

Keeps it cooler and brighter



LP® PROSTRUCT® ROOF SHEATHING WITH SILVER TECH

LP® SMARTSIDE® TRIM

LP SMARTSIDE PANEL SIDING WITH SMARTFINISH TECHNOLOGY



WALLS

Gives a brighter, cleaner look

FLOOR

Offers a tough, pro-grade finish



LP® PROSTRUCT FLOOR WITH SMARTFINISH®

GET THE TOTAL PACKAGE

PROVEN PERFORMANCE

Treated engineered wood materials from LP® Outdoor Building Solutions® feature innovations to deliver years of toughness and beauty.

QUALITY YOU CAN SEE

LP's lineup of shed materials is backed by exceptional warranties.

LPShed.com



NEW ENGLAND

IT MAKES GOOD SENSE

New Englands are our “good” barns, our least expensive, but don’t be deceived. What we call “good” is built to higher standards than many sell as their best. New Englands are built with the Northeast Coast’s legendary frugality – nothing fancy but nothing done halfway either. Skids are pressure-treated, and joists are installed on edge. Floors, walls and roofs begin with heavier lumber and are panelized for strength and a tight fit. SmartSide or vinyl siding, SmartFloors, keyed latches and six-foot piano hinges are our standards for barns that look better and last longer.



HANOVER, 12'x20'. SmartSide siding painted in Night Owl with Soft White trim, Medium Gray shingles, Cottage Stall doors, 30" x 36" aluminum windows, Z-style shutters, wood vent, cedar flower boxes and a large cupola with sailboat weathervane.

THE SECRET IS OVERHEAD

Hanover’s secret to success is its steeper roof pitch, which gives more headroom to the interior. Step inside a Hanover, and you’ll appreciate the roomier feel and deeper loft spaces.



THE 21ST CENTURY BARNYARD

Everywhere there is a little land, people are reimagining farming, bringing new life to the countryside and passing the joys of country living on to the next generation. This barn, whether adapted from a standard model or custom designed, will do all of that while keeping your favorite animals warm, dry and safe.

A LITTLE SOMETHING EQUINE

This is a modified Hartford stable, but you can also start with an Aurora, Hanover or Mystic and convert it into a stable with red gates and an 8'x12' tack room. Perimeters are reinforced for delivery without flooring. Dutch doors are available.

HARTFORD STABLE, 12'x28'. Modified Hartford with Smartside in Wilderness Cedar stain and steel roofing in Galvanized. Two 8' wide red gates, 6' high divider, 4' high kickboards, 28"x29" wood windows with Cherry accents, large cupola with horse weathervane.

HENRIETTA, 6'X6'. Available in five sizes. The Henrietta chicken coop is the ideal home for your flock. SmartSide in Willow with Weathered Wood shingles.

MYSTIC, 10'x10'. Where 'simple storage solution' and 'bold good looks' come together in one structure. Barn Red siding, custom color trim and doors, Weathered Wood shingles, Craftsman Crossback doors, wood vents.



IN CERTAIN CIRCLES,

requesting one more inch of space will get you kicked outdoors, which is actually the very best place to reclaim some elbow room, as this handsome Mystic barn demonstrates. It boasts a gambrel roof, a design that was not originally done for its handsome looks, but as an efficient way to get the most space within a given footprint. Gambrel roofs are still an excellent way to get more interior space inexpensively.



MYSTIC, 10'x16'. SmartSide in Spun Gold siding and trim, Soft White accents, Weathered Wood shingles, 66" wide Stall doors, 24"x36" aluminum windows.



Lofts hold an amazing amount of gear. They come standard with some barns, and you can add or adjust the depth.

WHAT YOU CAN DO WITH ONE MODEST RECTANGLE

Sometimes it doesn't take much, and this is one of those times! A simple barn with a little special paint and a flower or two can get the lawnmower out of the garage, bring your garden tools right where you use them, and simplify your life.

**FIND A LOWER PRICE?
WE'LL MATCH IT!**

Shop with confidence – it's our policy to be fair. See your dealer for details.



BIG JOHN SAYS,

“Don’t buy a barn built the old way. Modern wood technology results in a barn 100% better than those built, say, 20 years ago. Be sure your builder uses new methods and materials.”



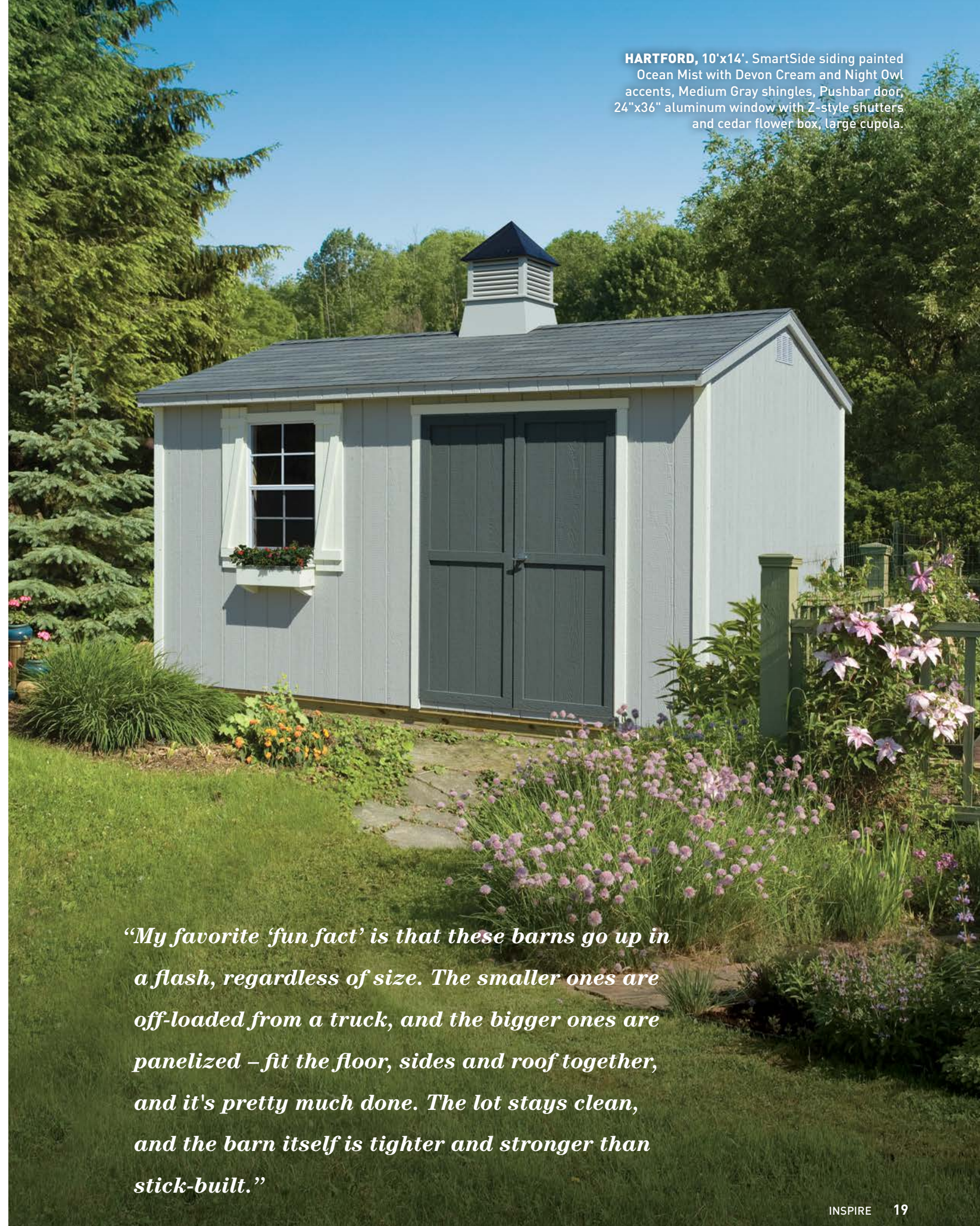
Ask about paying through Rent-to-Own.
Prepare your site and arrange for delivery.
That’s all there is to it!



DELAWARE, 8'x10'. Go traditional shed style with a saltbox roof. Willow siding, Devon Cream trim and Sage accent, Weathered Wood shingles, Cottage Stall doors, 24" x24" aluminum windows, flower box and cupola.



BOSTON, 10'x12'. This neat convenient barn puts a gardener’s tools right at hand while de-cluttering the garage. Khaki siding, Devon Cream on the trim and Crossbuck doors, Weathered Wood shingles and aluminum threshold.



HARTFORD, 10'x14'. SmartSide siding painted Ocean Mist with Devon Cream and Night Owl accents, Medium Gray shingles, Pushbar door, 24" x36" aluminum window with Z-style shutters and cedar flower box, large cupola.

“My favorite ‘fun fact’ is that these barns go up in a flash, regardless of size. The smaller ones are off-loaded from a truck, and the bigger ones are panelized – fit the floor, sides and roof together, and it’s pretty much done. The lot stays clean, and the barn itself is tighter and stronger than stick-built.”

SIGNATURE

A SMART CHOICE

Signature is our largest series, and frankly, the right choice in many circumstances. You get more included as standard, lots of choice in models and features, and designs that balance quality and cost, like 6" fascia and dimensional shingles – these match most houses. All of the construction basics, like joists on edge and treated skids, are standard. Check out the Standard Features (page 67), and you'll find that if it's a Signature, it's a smart choice.



SECRET GARDEN SHEDS

WHEN A LOVE OF GARDENING IS FIRST, LAST AND ALWAYS

She sheds are all the rage, and they are blossoming in many forms, from craft rooms and writer's retreats to tea rooms and guest houses. Among the most enchanting are beautiful new potting sheds for gardeners.

SKYLINE, 10'x10', SmartSide with Driftwood stain and Turquoise accents, 20"x36" and 28"x29" wood windows, Cottage Stall door and Weathered Wood shingles.

RAINDROPS ON ROSES

Step inside one of these newly imagined garden sheds, and you are whisked back to a simpler time and a more beautiful place. Whether you start with a layer of whitewash or a pale green like Green Stone, that's all you need for a space that welcomes you home every day of the week. Our favorite extras are workbenches - by themselves or topped with a solid countertop, perhaps in tin, granite or tile.

A little old table, a scrap of pretty fabric, your best vases or pots and a fairy garden or two will add a touch of magic, even if your potting shed/storage barn/greenhouse is hard at work most days.



While mostly for garden tools, this shed also houses oars for the family's rowboat and lifejackets in an old cedar chest. Maybe yours would put baseball gloves or badminton nets within reach?



MELT INTO SPRING

Imagine the many possibilities: a long workbench for rows of pots, dried herbs hung from the rafters, bushel baskets in the corners and a lantern to let you work into the dusk.

Sometimes a pop of color is called for! Go ahead, have fun...it's just paint.

LOVE those big red doors!

Kathy Lehr, chef extraordinaire, loves the big red doors on her new Aurora, part of an outdoor kitchen ensemble that takes outdoor cooking to a whole new level. The Lehrs' outdoor kitchen plays host to both dinner guests and students in Kathy's cooking classes. The barn's built-in workbench, loft and stainless steel tables give students plenty of places for prep, cooling and equipment storage.



AURORA, 10'x16'. Pine Cove siding with Trail Smoke stain, Weathered Wood shingles, 72" fiberglass doors with 10 lights and Cherry paint on both sides, 24"x24" aluminum windows (across back wall), 28"x29" wood-framed windows, cedar flower boxes, corbels, Silvertex roof sheathing, workbench and 2' loft.

CLAY OVEN CLASS

Nationally known chef Kathy Lehr builds clay ovens like the one below and teaches others how to build and use them. While the oven can bake or roast almost everything, Kathy's focus is on artisanal breads of a quality few have ever tasted. Lehr was taught by Danielle Forestier, legendary baker who mentored Julia Child in breads. Forestier calls Lehr: "the best bread maker east of the Mississippi."



NEW STAINS NOW AVAILABLE

Stains have always been available for Pine Cove siding, and now you can get the same rustic look on SmartSide and SmartLap with our new Wilderness stains in five hues.



BEAUTIFUL BACKDROP

Kathy's new Aurora barn makes outdoor entertaining easier by putting outdoor table settings and small appliances within easy reach. Off season, it offers plenty of clean, dry storage space for tables, chairs and accessories.

To inquire about cooking classes or buy a bread-baking DVD, contact Kathy at taoofdough@neo.rr.com.



HOW TO GO FROM SIMPLE TO SPECTACULAR

The three 10'x12' Auroras below begin with siding in Pewter Paint, trim in Devon Cream and Medium Gray Shingles. Aurora is available in sizes from 8'x8' to 24'x32'.



SIMPLE, EVERYTHING INCLUDED
Every Aurora is built to the high standards of the Signature series, which are listed on page 67. The Pushbar door shown here is standard.



WIDER DOORS, WINDOW & SHUTTERS
We upgraded the door style to Cottage Stall, which is 66" wide, and added a 30"x36" aluminum window with crossbar shutters. The corner boards are painted in Devon Cream.



GOOD LOOKS TO ENJOY EVERY DAY
This Aurora is dressed up with SmartLap siding, bright Turquoise doors and Devon Cream fascia and corbels. There are now three 28"x29" wood-framed windows with 30" and 60" cedar flower boxes. A large cupola is the finishing touch.

AURORA MAGIC

When you organize all that et cetera now cluttering your garage or basement into a new storage barn, it lets you reclaim those other areas, too. It's like getting two spaces for one, a little magic that bumps up the quality of your lifestyle to a surprising degree.



Right: AURORA, 8'x12". SmartSide siding in Ocean Mist with Soft White and Coral accents, Cottage Stall doors and a 24"x36" aluminum window.

EAT. DRINK. ROW.

Were this barn's owners to indulge in a mostly unplugged weekend, they would go where the wind tells its secrets to the trees and they can row all day. This boathouse makes it possible - its spacious interior is accessible on the side or the end.



AURORA, 14'x20'. SmartSide siding in Latte with Spun Gold and Devon Cream accents, Weathered Wood shingles, 66" double Archtop doors, 30"x36" aluminum windows, 60" cedar flower box, large wood vents, copperside cedar cupola with louvers and copper finial.

FIVE WAYS TO DO MORE WITH SKYLINE

Like your favorite song, a Skyline can be played in many different ways. Its simple lines and studied proportions make it easy to create something special. You can vary the roof pitch, wall height and overhang. Spec it in twenty-seven sizes, from a tidy 8'x8' to a huge 24'x36'. Every door, window style and accessory is available. If there were ever a barn that deserves your consideration, the Skyline is it!

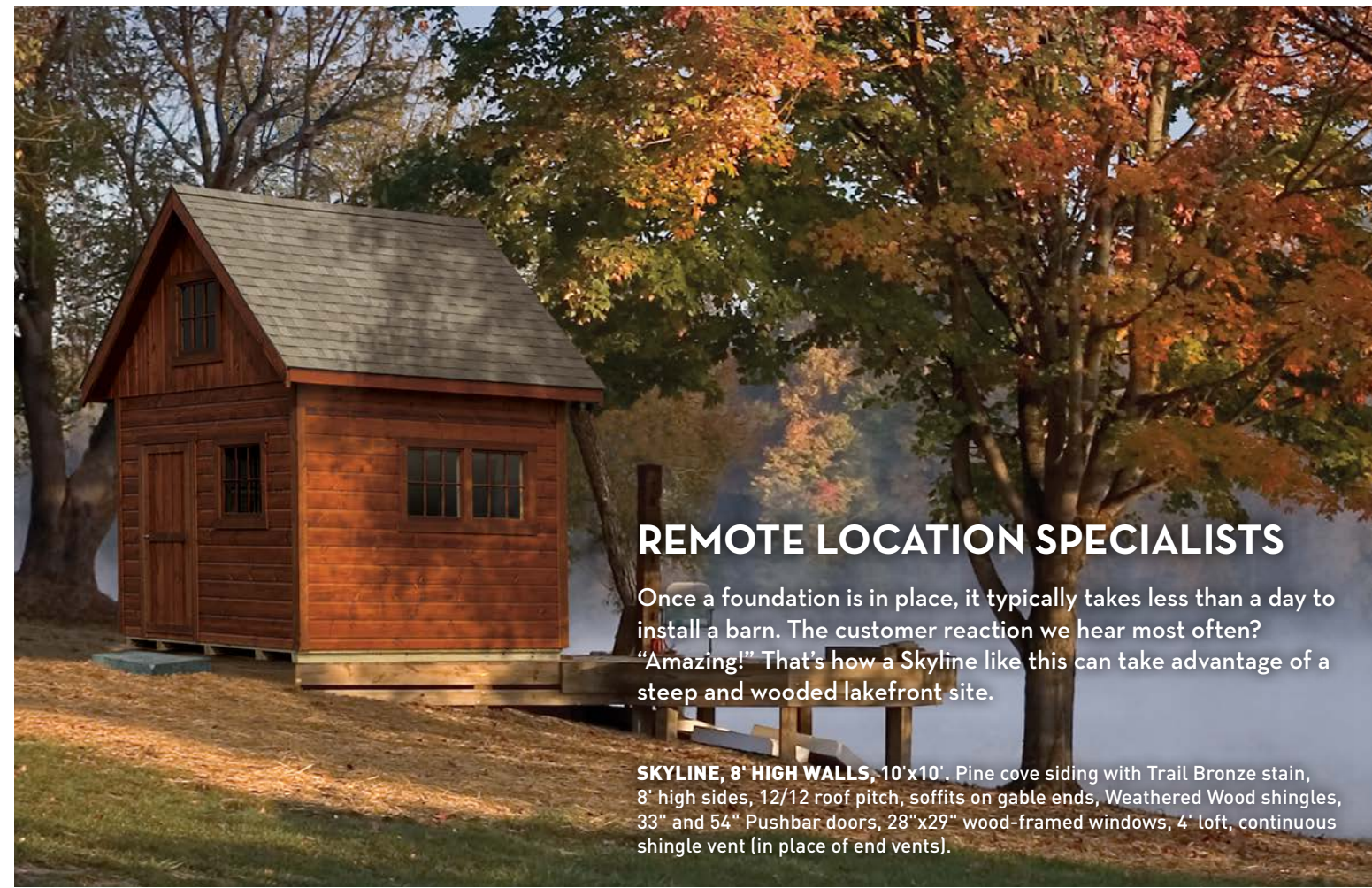


SKYLINE, 36" OVERHANG, 14'x16'. An extended overhang and heavy-duty arched timber braces provide welcome shade and shelter. SmartLap siding, Barn Red paint with accents in Trail Cedarwood stain, Black shingles, Cottage Basic doors in pine, 28"x29" wood-framed windows, corbels, large wood vents, awning, copperside cupola with glass panes.

INSPIRATION FOR SUMMERTIME

A Skyline barn is terrific in so many ways, whether you choose vertical siding, pine cove or vinyl. Consider raising the roof, too. There are two ways to do this with a Skyline – specify 8' walls and/or a 12/12 roof pitch.

SKYLINE, 12'x16'. SmartSide siding and trim in Driftwood, Galvanized steel roof, Cottage Basic doors, and 28"x29" wood windows in Cherry accent.



REMOTE LOCATION SPECIALISTS

Once a foundation is in place, it typically takes less than a day to install a barn. The customer reaction we hear most often? "Amazing!" That's how a Skyline like this can take advantage of a steep and wooded lakefront site.

SKYLINE, 8' HIGH WALLS, 10'x10'. Pine cove siding with Trail Bronze stain, 8' high sides, 12/12 roof pitch, soffits on gable ends, Weathered Wood shingles, 33" and 54" Pushbar doors, 28"x29" wood-framed windows, 4' loft, continuous shingle vent (in place of end vents).



SKYLINE, 10'x16'. 5" straight vinyl siding in Olive with White trim, Weathered Wood shingles, Cottage Crossback doors, 30"x36" aluminum windows, Z-style shutters.

NOT YOUR ORDINARY SHED

Its modest size and classic shed roof are lifted far above ordinary with a few deft touches, beginning with Barn Red archedtop doors with decorative hinges, paired wood windows and a simple but striking long window on the end.

SPRINGFIELD, 10'x14'. SmartSide siding painted Latte with Barn Red doors, Devon Cream trim and Pewter accents on the window frames and grills. Medium Gray shingles, Archtop door, strap hinges, 28"x29" wood-framed windows, 60"x10" aluminum window.



PERFECT PITCH

A few simple changes to the standard Skyline created this all-time favorite barn: a 12/12 roof pitch clad in custom slate shingles. It has stood the test of time as the barn most people want. If you are going to build one barn and you want it to please the eye of everyone who sees it, we can recommend this customized Skyline.



SKYLINE, 12/12 PITCH, 14'x16'. Pine siding, Smoke stain, Archtop doors, custom shingles, large wood vent.

NOTHING ELSE WORKS QUITE AS WELL

Classic gambrel-roofed barns give you extra height for really big equipment or lofts that hold more. Ontario's 6'6" sidewalls allow for full-height doors on the ends and/or the sides while the more compact Windsors accommodate end doors only.

Rural Repertoire. From a cozy 8'x8' Windsor to a massive 24'x40' Ontario or on up to custom sizes, our gambrel-roofed barns are roomy and well fitted. The largest come with a full loft and pull-down stairs; 14', 16' and 20' wide barns have a 4' loft; 10' and 12' wides have a 2' loft. Regardless of size, all Ontarios and Windsors have hefty 2"x10" top plates.



WINDSOR, 10'x12'. SmartSide™ in Ocean Mist and Soft White, Medium Gray shingles, Crossbuck doors.



ONTARIO, 12'x16'. Riverway siding, Devon Cream trim and Weathered Wood shingles. Craftsman Stall doors, 30"x36" aluminum windows, crossbar shutters and a large cupola.

BUILD IT ONCE

Build a barn the right way, and you'll have the extra space you need without a lot of work. 1. Buy a better construction & paint finish 2. Install a solid base 3. Have your barn delivered 4. Rest, relax and smile.



ONTARIO, 16'x28'. Barn Red SmartSide siding with Devon Cream trim, Weathered Wood shingles. Pushbar door, 24"x24" aluminum window and 9'x7' garage door with decorative strap hinges.

ADD BARN AND STIR

Serve up a crowd with this spacious outdoor kitchen helping out with its big clerestory windows, placed up high to invite the sunlight inside.

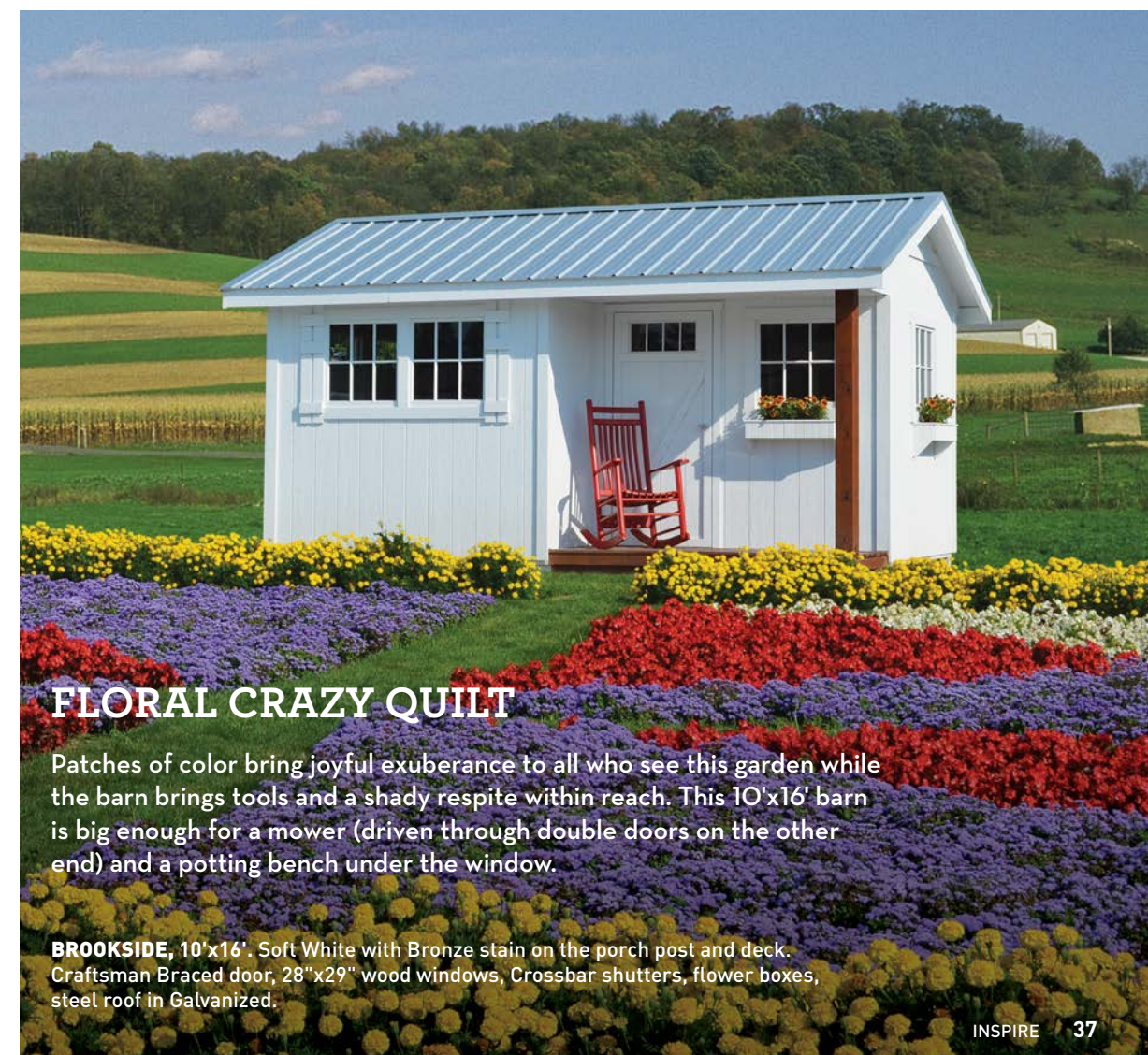


SOMERSET, 10'x16'. SmartSide with Ocean Mist and Devon Cream trim, Weathered Wood shingles, Cottage Basic doors in pine with Trail Bronze, and 30"x36" aluminum windows with Crossbar shutters.



BIG JOHN SAYS,

"Don't be shy about bringing in competitor's price sheets. We are happy to help you make fair and accurate price comparisons"



FLORAL CRAZY QUILT

Patches of color bring joyful exuberance to all who see this garden while the barn brings tools and a shady respite within reach. This 10'x16' barn is big enough for a mower (driven through double doors on the other end) and a potting bench under the window.

BROOKSIDE, 10'x16'. Soft White with Bronze stain on the porch post and deck. Craftsman Braced door, 28"x29" wood windows, Crossbar shutters, flower boxes, steel roof in Galvanized.

UNDER COVER

A PORCH BECOMES A SHOWCASE FOR FAVORITE PLANTS

This generously sized garden shed gets it just right with deep plant shelves, perfect for transferring starts, hardening off seedlings and displaying your favorite shade plants. A stained door, finished deck, window awning and steel roof add texture and brightness.

LEXINGTON, 14'x16'. SmartSide siding painted Willow with Soft White trim and accents in Trail Cedarwood stain, steel roof in Galvanized, 33" and 66" pine doors, 28"x29" wood-framed windows, awning over windows, two plant shelves.



BIG JOHN SAYS,

"The secret to a good porch barn lies under it. Joists must run crosswise under the barn and continue out under the porch. Run them lengthwise, and the porch can settle or even separate. If you want a porch barn, be sure it's built this way."



LIVING ON THE OUTSIDE

Nothing induces a feeling of open-air freedom like wind-blown moments on your favorite porch, especially when sturdy posts and a well-stained deck ground that breezy feeling.

SCIOTO, 20'x20'. SmartSide in Sage with Khaki trim, Tan shingles and Trail Bronze stain on the large cupola, doors, windows, and porch deck and posts. Cottage Braced doors in pine, 28"x29" wood windows and 30"x36" aluminum windows with Z-style shutters.



A DELIGHTFUL PLAYHOUSE CAFÉ

transports any child to a world of make-believe, where the china is real but the tea is sipped from the air and the cupcakes, while sometimes real, are more often entirely imaginary.

This family doubled the use of their backyard structure by dividing the interior with a three-quarter's high wall. On one side lies some serious storage room and on the other a fun play house, a clever use of space and cost-effective to boot.

Turning the playhouse into a café was the sisters' idea, inspired by the French bakery in *Grace*, an American Girl movie. When their mother found a well-loved, framed blackboard and repainted it, voilà, it became a menu board. Since then, many old treasures have been given a new lease on life and now impart a lovely nostalgic feeling to the café.

When the children are grown and ready to give up their playhouse-café, it will be converted to additional storage space.

LEXINGTON, 12'x14'. Customized with ¾ height divider wall and custom paints and paint scheme. SmartSide with Medium Gray shingles, 33" Cottage Braced pine door with decorative strap hinges, 30"x36" aluminum window with Crossbar shutters. Not shown: 54" braced pine doors and 14"x21" aluminum window.

The owners say, "This divided barn fits perfectly in our yard, charms everyone who sees it and is exactly what we had planned."





BLUE WATER FUN

NEW FOR 2016! If the blue door on this pool house is any indication, this is a place for lots of splish-splash fun. It's surprisingly practical, too, with plenty of room for pool toys, ice-filled coolers and off-season furniture storage. Last one in's a rotten egg!

PAYSON, 12'x16'. Soft White siding and trim, Medium Gray shingles, Cool Blue Cottage Stall door, 30"x36" aluminum windows, 28"x29" wood windows, paired 6"x6" porch posts and porch deck with Trail Cedarwood stain.



LITTLE JOHN SAYS,
"Fun is more fun when you can count on your barn being solidly built. Here's what to look for: metal truss plates, joists installed on edge, piano hinge – all standard here!"



NEW 8/12 PITCH

Early 20th Century bungalows were often built with hip roofs like our Hampton and Payson barns, now better than ever with an 8/12 roof pitch. It's a comfortable, sheltering look whether it matches your house or adds a touch of Craftsman-inspired cottage style.

HAMPTON, 12'x16' with 8/12 pitch. SmartSide in Ocean Mist, Soft White trim and fascia, Medium Gray shingles, Pushbar door in Moody Blue, double 8-light fiberglass doors and 24"x24" aluminum windows.

GARDEN GRACES

Some of the most charming garden nooks are those graced by a comfortably placed structure, like this thoughtfully designed garden shed with its translucent roof, plant shelves and window box.

GARDENER, 8'x10'. Willow with Soft White trim, Viva Violet door, Weathered Wood shingles, Craftsman Braced door, cupola.



TAKE IT EASY NOW

Keeping it simple is often the best idea, and the shed-roof simplicity of Elliot does it beautifully in this desert landscape, where it is the ideal cover for pool equipment and supplies.

FIVE SIDES A WINNER

Sometimes all it takes is a slightly different shape for a barn to fit beautifully in the space you have. That's what this five-sided design does, tucking neatly into a corner or anywhere that needs a little something special.

MARCO, 10'x10'. SmartSide in Pewter with Sandstone trim, Black shingles, 15-light fiberglass doors, 24" x36" aluminum windows, 24" flower boxes, vinyl shutters.



ELLIOT, 8'x10'. SmartLap siding painted Still Water with Soft White accents, 54" Pushbar doors in pine with Trail Cedarwood stain, Medium Gray shingles, 60" x10" window.





KIDZSPACE

A HOME OF THEIR OWN

KidzSpace playhouses are ready for any child's world of make-believe and adventure, built to KidzSpace standards to last through a whole family of childhoods and fitted out with child-safe glass. All but Storybook have a child-sized loft and a discreet adult door on one side.



A LOVELY SHADE OF PRINCESS PINK

Actually, a Victorian in any hue is sure to spark the imagination of your favorite little ones, especially if adorned with a porch and fancy white railings. (Optional for Victorian and Castle, but how can you resist?)

VICTORIAN, 8'x8'. SmartSide painted Princess Pink with Soft White accents, Medium Gray shingles, 14"x21" windows and 3'x8' deck.



VICTORIAN, 8'x8'. A pirate captain's hideaway? In Ocean Mist, Cool Blue and Cherry with Medium Gray shingles and 14"x21" windows.



VICTORIAN, 8'x8'. In Lemon, Soft White and Viva Violet, this Victorian is never shy. Medium Gray shingles and 14"x21" windows.



MEET ME BY THE BLUE PICKET FENCE

It's called the Clubhouse, and it's all set for stuffed animal naps, secret pirate meetings and conclaves with cousins. Perfect for a paint job that brings out the child in you.

CLUBHOUSE, 8'x12'. SmartSide painted Cherry with Viva Violet, Turquoise and Lemon. Weathered Wood shingles, 14"x21" and octagonal windows.



IT TAKES A VILLAGE

Our littlest playhouse just asks to be clustered in a village of two or three or four or five. It's a reminder that little is good, little is right for little ones, and the little price of Storybook is welcome, too!

STORYBOOK, 4'x6'. LEFT: SmartSide painted Turquoise with Soft White accents, Medium Gray shingles. CENTER: Painted Kid's Orange with Soft White accents, Medium Gray shingles. RIGHT: Painted Coral with Soft White accents, Medium Gray shingles. 14"x21" window.



ONE ENCHANTED CASTLE

It is oh so easy to imagine the brave princes, beautiful princesses and fire-breathing dragons bound to gather at this enchanted castle.

CASTLE, 8'x8'. Night Owl siding, with pine door in Trail Bronze stain and Soft White trim and shutters. Medium Gray shingles.



Play Well. TOGETHER.

Bright paints make a statement on front doors and trim, but their specialty is in making playhouses playful, where color tells children this is a place especially for them.

HUDSON BAY CUSTOM

ARCHITECTURALLY INSPIRED

A good friend once said, "Every little bit helps," and that is certainly true of the architecturally inspired design of Hudson Bay Custom structures, available with Spanish cedar doors, many choices in siding and windows, and wonderful details like cathedral ceilings and exposed rafters. One can do more with Hudson Bay – after all, the sky is the limit with custom structures. Hudson Bay Custom gives you exactly the look and quality you want.

PERFECTLY PUMPKIN

Everything about this tranquil symmetrical design is kicked up a notch with Pumpkin paint, a perfect contrast that jolts this garden from quietly elegant to simply sensational.

CORTLAND CUSTOM, 10'x10'. Pine cove siding in Pumpkin, 8-light Spanish cedar doors, 20"x36" wood windows, exposed rafters and standing seam steel roof in Gavalume.



TEA, ANYONE?

“Inviting” is hardly enough to describe these charming ‘playhouses for grownups’ with three different roof treatments – cedar shakes with or without a functional reverse gable, and a single-point roof with slate shingles. Among the many, many possibilities with a custom building.

MONTREAL CUSTOM, 10'x16'. Deceive the eye... with a miniature house beautifully finished with 60" long windows and shutters, decorative cedar shakes on the roof, gable ends and dormer, and wide plant shelves ready. SmartSide in Spun Gold, Devon Cream trim, 9-light Spanish cedar doors, exposed rafters and corbels.



GENEVA CUSTOM, 10'x12'. Long shutters, exposed rafters, corbels, cedar shakes, 9-light Spanish cedar doors and a coppertop cupola. SmartSide siding in Sage, trim and doors in Khaki, and triple wood windows.



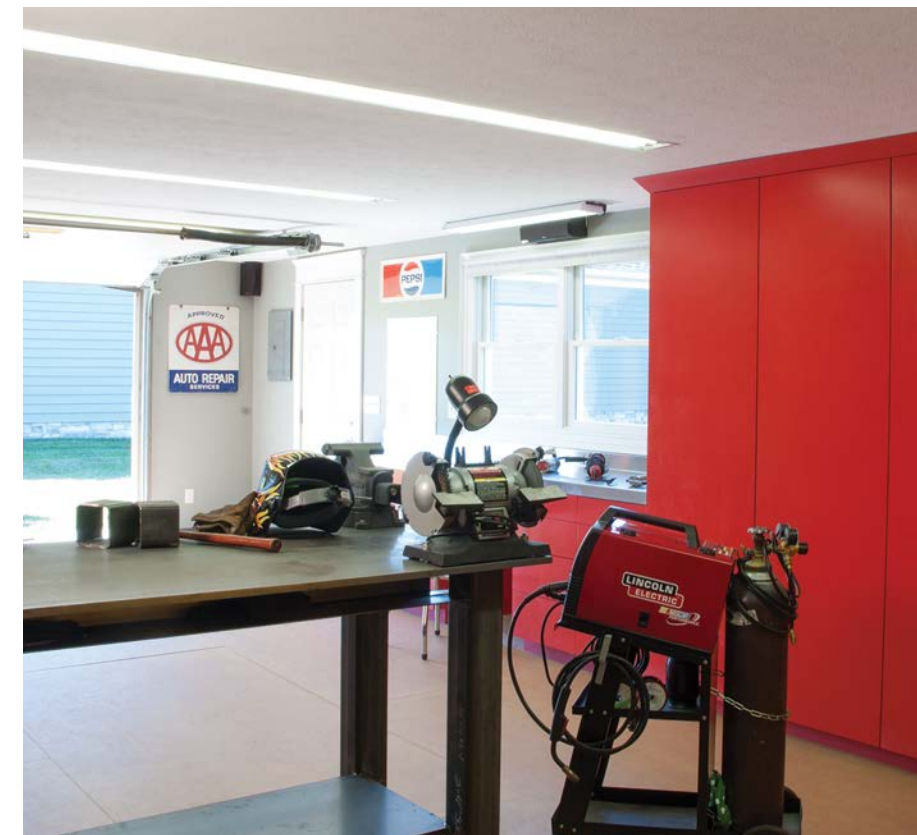
MARCO CUSTOM, 12'x12'. Exposed rafters, custom slate shingles, Smoke stain on cedar lap siding, double full-light Spanish cedar doors, double 20"x60" windows and awning.

IT'S ALL YOURS

Whether you want to work on cars or motorcycles, display antique cars, stow hunting gear, build boats, listen to loud music, play pool or watch action movies on a really big screen, you need space! Lots of it! Fitted out to make work easier and fun right at hand.



SKYLINE, 20'x24'. This big barn gives the man of the house extra garage and workshop space with plenty of room for large and small projects. SmartSide in Pewter with Devon Cream trim, Weathered Wood shingles, 9'x7' garage door with decorative strap hinges, Craftsman Stall door, 28"x29" wood windows, 8' sides and a reverse gable dormer with large wood vent.



Wallboard and a dropped ceiling finish off the garage area while custom red cabinetry and a stainless steel countertop add good looks and lots of storage.

PARK IT YOUR WAY

This big red barn can accommodate classic cars or your biggest garden tractor, a workshop and much more. This one is custom, but the other option is to convert a Skyline or Aurora to a garage with three simple adaptations: (1) 8' side walls, (2) 9'x7' insulated garage door, (3) plank flooring.



SKYLINE, 20'x24'. SmartSide in Khaki with Sandstone trim, Weathered Wood shingles, 9'x7' garage door with decorative strap hinges, Craftsman Stall door, 28"x29" wood windows, a coppertop cupola with glass panes and Z-style shutters.

BIG JOHN SAYS,

"Since we build garages both custom and by adapting barn structures, ask us! We will advise which way is best and least costly for you."



Go custom with your garage for maximum flexibility in dimensions and detailing. This lets you match your house and fit out the interior to suit your needs, hobbies or interests. Bball, anyone?

HOLIDAY EVERY DAY



BIG JOHN SAYS,

“We can build a studio, cottage, pool house ... whatever you want. Our efficient, Earth-friendly building methods give you fast installation and more for your money. Let us help ... we can advise whether to adapt a structure or start with a custom architectural plan.”

IMAGINE TAKING THE KIDS ON VACATION EVERY SUMMER DAY!

A trio of sliding glass doors open to splashing kids and smiling parents. “It’s like vacationing in our own backyard,” say the happy owners. The pool house/guest house has easy-care stone and stucco siding, and inside, guests and family find tile floors, a full entertainment-style kitchen, and changing rooms. This design began with a very modified Lexington, 20'x48', with the pitch increased to accommodate a cathedral ceiling and a loft with bedrooms and en suite baths.



HERE COMES THE SUN!

This cozy, custom, off-the-grid structure near Lake Erie is powered efficiently by solar cells. Consider these advantages of solar:

- long-term electric savings
- tax credits, rebates and other incentives
- increased home value
- virtually maintenance-free solar panels (25-year lifetime)
- payback in as few as ten years

Solar is an idea whose time has come. We can help you arrange installation for a barn or shed, garage, cabin, cottage or home.



Three thermal collectors (left) provide hot water for the building.



LP SmartSide® Precision panels with cedar grain texture exteriors are engineered to last longer. SmartFinish®, a smooth interior is much more attractive than grainy, blotchy plywood.



8" PINE COVE



6" SMARTLAP



5" STRAIGHT VINYL

WHAT TO LOOK FOR IN LAP SIDING

Our pine cove and SmartLap siding are better than most because they are designed with clear drip paths that channel rainwater away. This prevents wicking to the inside, which can cause rot.

GARAGE DOORS



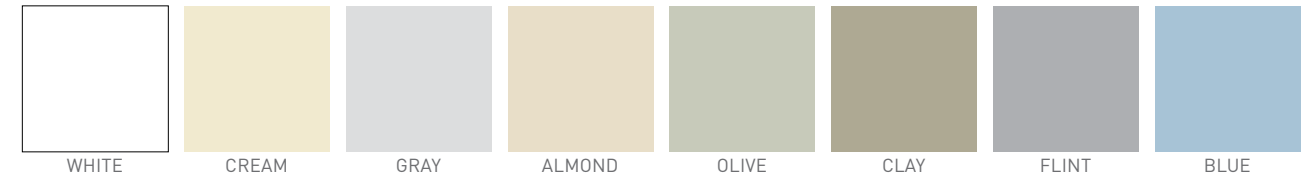
SHINGLES shown as dimensional shingles



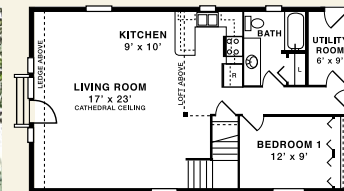
STEEL ROOFS 29 gauge.



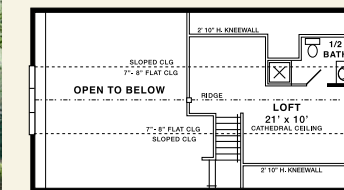
VINYL SIDING



VINYL SHUTTERS



FIRST FLOOR



SECOND FLOOR

FAST ESCAPE Cottages that spring up overnight

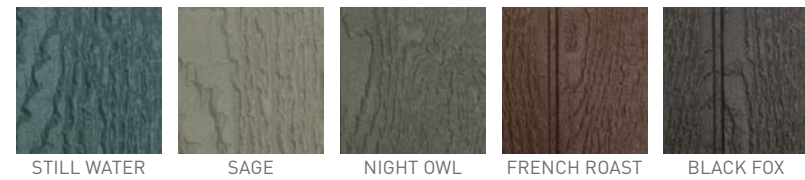
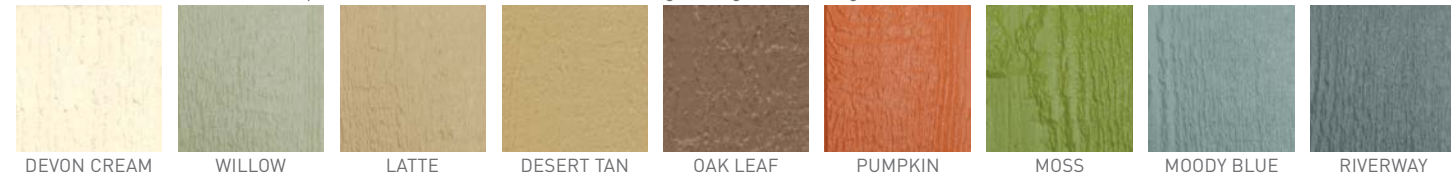
In 48 hours - or less - your new cottage can be installed anywhere you want. Panelized walls and roof are factory-made, adding precision, reducing cost and slashing on-site time. From 20'x24' to 24'x40'. See your dealer for specs.

TODAY'S PALETTE

STANDARD PAINTS Soft White also available



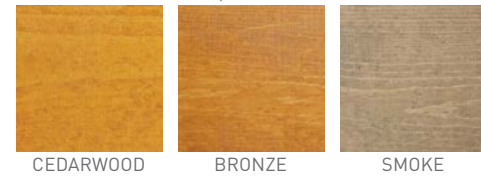
PREMIUM PAINTS Premium paints are available on trim at no extra charge. Using one for siding costs a little more.



WILDERNESS STAINS For SmartSide and SmartLap



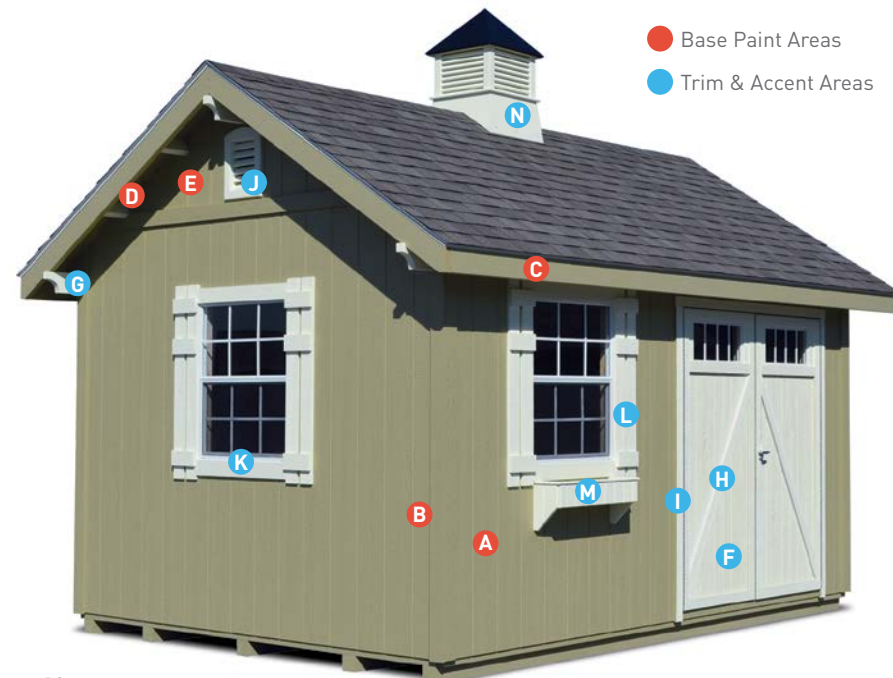
TRAIL STAINS For pine or cedar



SUPER BRIGHTS



STANDARD PAINT SCHEME SHOWN



- Base Paint Areas
- Trim & Accent Areas

- A Siding
- B Corner boards
- C Fascia
- D Soffit
- E Gable ends – splice and above
- F Door panels
- G Corbels
- H Door trim
- I Trim around doors (on barn)
- J Wood vents
- K Window trim
- L Wood shutters
- M Wood flower boxes
- N Cupola
- O Awning (not shown)
- P Wood windows (not shown)

Printing does not allow for absolutely accurate hue representation. See your dealer for actual samples.

DOORS



COTTAGE BASIC ALSO AVAILABLE

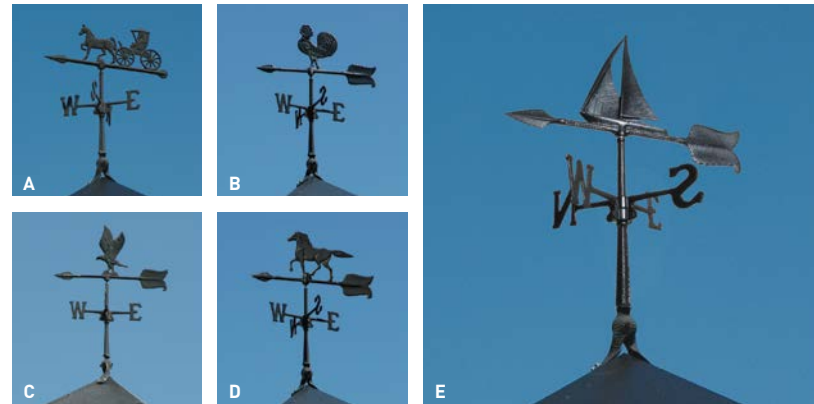


FINISHING TOUCHES



Coppertop cedar cupolas with glass or louvers

Cupolas, medium or large in unfinished, treated wood



WEATHERVANES Weather vanes available only on cupolas. **A:** Carriage **B:** Rooster **C:** Eagle **D:** Horse **E:** Sailboat

WINDOWS
Aluminum windows available in white or dark brown. Wood windows are available in 28"x29" and 20"x36."



Aluminum 24"x36" single hung with grills

Aluminum 30"x36" single hung with grills

Wood Window, 28"x29" or 20"x36" stationary with grills

Aluminum, 24"x24" stationary with grills



SHUTTERS
Left to right: Wood Crossbar, Wood Z-style, Vinyl louvered



A: Aluminum Threshold Plates (standard with garage doors) **B:** Cedar Window Box, 24", 30", 48", 60", 72" **C:** Awning **D:** Corbels **E:** Drop Rods (use with wood doors) **F:** Strap Hinges (decorative and functional, replaces piano hinge)



RADIANT BARRIER
Reduces solar heat gain significantly and installs in place of regular roof sheathing.



Reverse Gable Dormer

Portable Metal Ramps

Treated Ramps, 54" or 66" wide Ramps are 48" deep

BARN RAISING

After more than 24 years of building barns, garages, playhouses, potting sheds, cabins and houses, our structures still go together like old-fashioned barn raisings, where each relies on the top skills of the company's craftsmen, renewable resources and efficient methods.

THOUGHTFUL PREPARATION. We begin with thoughtful designs that complement every housing style. We then carefully choose bright lumber, cleaner and straighter than in many houses.

OUR PANELIZING PROCESS IS UNIQUE, a word we do not use loosely. It builds straighter, stronger walls that fit together tightly.

BAKED-ON FINISHES. Paint and stain cure best with seven days of hot, sunny weather, a near impossibility. We took the process indoors to a new facility, where heat and UV exposure replicate a hot sun, improving the adhesion of paint or stain on every factory-built barn. And now available with built-on-site barns, too!



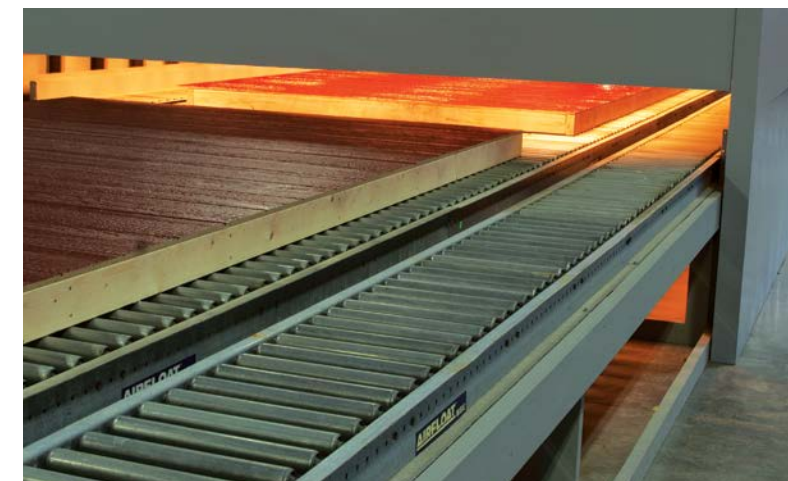
A BETTER WAY TO BUILD. Panelization wastes less; creates stronger, straighter, tighter walls; and goes together quickly at the site. Overall, it's better than stick building.

PANELIZING IS CLEAN AND GREEN. It uses lumber efficiently, generates less waste and lets us build a barn on site with surprising speed and little site disturbance.



EARTH FRIENDLY PROCESSES

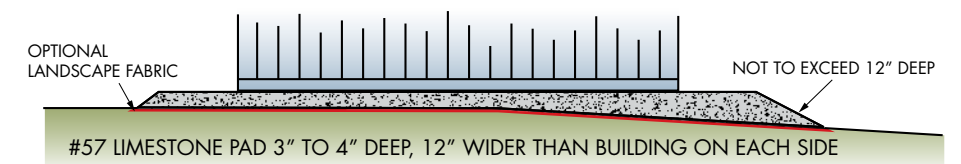
STRONGER FLOORS. We install joists on edge, multiplying their strength and stability. It takes more lumber and time, but the advantage is huge - imagine how hard it would be to replace the beams under a barn! Do it right to begin with, we think.



Most barns are not paint-cured properly, but with a new baked-on process, ours are!

HOW TO PREPARE YOUR SITE

A 3"-4" deep #57 limestone pad that is 24" larger than barn dimensions (12" for each side) is recommended. Customer is responsible for site preparation, building or zoning permits and any caulking.



Inquire at your dealer for other ways to prepare a site.

LAST BRUSHSTROKE

When Leigh Smith spoke to us from LP's international headquarters in Nashville, she clarified several important points about LP's SmartFinish Technology.

LEIGH, COULD YOU EXPLAIN TREATED ENGINEERED WOOD?

"Untreated wood was a huge problem for generations, and when modern chemistry allowed us to treat wood, it revolutionized the building industry. We took this a huge step forward by developing SmartGuard, an advanced, environmentally-friendly treatment specifically for engineered wood. Today, treated engineered wood, especially with SmartGuard, is indispensable to lengthening the life and structural soundness of buildings everywhere."

WHAT PART DOES LP PLAY IN THE ENGINEERED WOOD

INDUSTRY? "We pioneered treated and engineered wood, creating construction materials that look good and stand up to the elements. We are a global leader in materials engineered for barns, sheds and homes. No one else makes more products engineered specifically for accessory buildings."

MAYBE THIS IS A DUMB QUESTION, BUT WHY NOT JUST CUT UP A

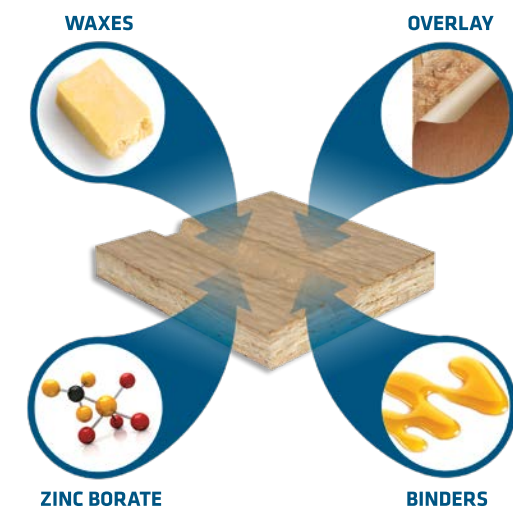
TREE? "You could, but with more sophisticated processes, we can use the entire log from fast-growing trees that regrow quickly in SFI Certified Forests, managed to optimize timber's splendid ability to renew itself."

WHAT ELSE GOES INTO A GREAT BARN?

"We couldn't do it without you! People in the barn industry recognize your innovative design and construction and high quality paint application. With world-class materials, impressive designs and solid construction, your customers always get a great barn, whether big or small!"



Leigh Smith, Segment Marketing Manager, LP Corporation, talked to us from the company's international headquarters about treated, engineered wood and how it is essential to building today.



SMARTSIDE & THE ENVIRONMENT

1. LP SmartSide products are made from wood – a renewable, natural resource.
2. LP relies on small, fast-growing trees that can be replenished more quickly than older, larger trees.
3. LP uses SFI Certified Forest Management systems to ensure that wood comes from well-managed forests.
4. LP uses the entire log. Wood waste is repurposed or used as fuel for the mills.
5. LP uses only low-emitting, safe resins while making SmartSide and does not add formaldehyde.



SMARTGUARD® LP's products use treated wood strand technology with advanced binders, wax and SmartGuard, a proprietary zinc borate, to resist moisture, fungal decay and termites.

STANDARD FEATURES

	New England Series - page 12-19	Signature Series - page 20-45	KidzSpace - page 46-49
Wood Doors	6' H, 2"x3" frame, adjustable steel brace, keyed door latch Single door: 33" W Double door: 54" W	6' H, 2"x3" frame, adjustable steel brace, keyed door latch Single door: 33" W Double door: 54" W	2"x3" frame, adjustable steel brace, keyed door latch Adult door, except Storybook: 26"x63" or 33"x72" Child door: 20"x40"
Single Door	6' W barns	6' W barns plus Brookside & Gardener	26"x63" Clubhouse & Victorian 33"x72" Castle
Double Door	8' W and wider barns	8' W and wider barns except Gardener	
Piano hinge	Aluminum, 6' continuous	Aluminum, 6' continuous	Aluminum, 6' continuous
Siding	SmartSide® or 5" straight vinyl	SmartSide®, 6" SmartLap, 8" pine cove or 5" straight vinyl	SmartSide®
Wall framing	2"x4" wall framing, 24" on center	2"x4" wall framing, 16" on center	2"x4" wall framing, 24" on center
Vents	Two 8" x 16" aluminum vents (one for 6' wide barns)	Two small wood vents (one for 6' wide barns)	Ridge vent
Pressure-treated skids	4"x4" skids: 6' W (2), 8' W (3), 10' W (5), 12' W (5), 14' W (5), 16' W (8), 20' W (10), 24' W (10)	4"x4" skids: 6' W (2), 8' W (3), 10' W (5), 12' W (5), 14' W (5), 16' W (6), 20' W (8), 24' W (9)	4"x4" skids: 4' W (2), 6' W (2), 8' W (2)
Pressure-treated skids, Lexington & Scioto		4"x4" skids: 12' W (5), 14' W (6), 16' W (6), 18' W (6), 20' W (7), 21' W (7), 23' W (8)	
Floor joists	2"x4" untreated joists, on edge, 16" on center, with treated rim	2"x4" treated joists, on edge, 16" on center, with treated rim	2"x4" untreated joists, on edge, 16" on center, with treated rim
Flooring	¾" SmartFloor	¾" SmartFloor or ¾" premium grade pressure-treated plywood	¾" SmartFloor
Trusses	24" on center	24" on center	24" on center
Fascia	4"	6"	4"
Shingles <small>Aluminum drip edge on all roof edges</small>	25-year 3-tab fiberglass	30-year dimensional fiberglass	30-year dimensional fiberglass
Roof sheathing	7/16" OSB	7/16" OSB	7/16" OSB
Warranty	5-year, top to bottom	20-year, top to bottom	20-year, top to bottom

Signature and New England vinyl barns

- SmartSide door with standard paint
- Continuous shingle ridge vent (no end vents)
- Choice of siding/trim/shutter hues (corner trim same as siding)
- White, Almond or Clay for soffit and fascia
- Aluminum threshold plates

SmartSide, SmartLap and vinyl barns come with SmartSide doors. Pine siding comes with a pine door.



RELAX. We've got you covered with Louisiana Pacific's 5-year, 100% labor and replacement warranty for SmartSide and a 50-year pro-rated, limited warranty on the substrate. SmartFloor has a 5-year limited warranty and that's in addition to our 20-year warranty for Signature.