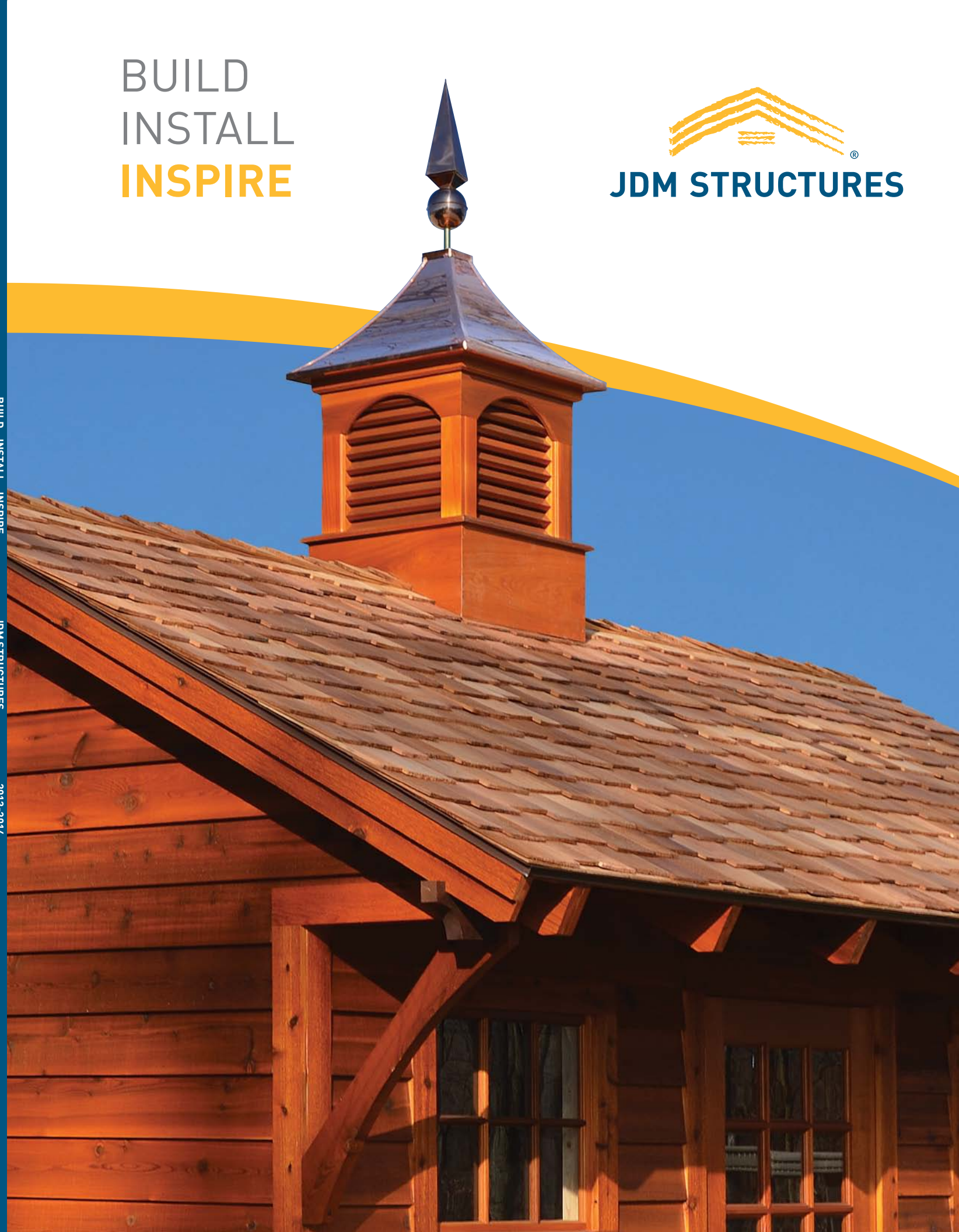




BUILD
INSTALL
INSPIRE



BUILD INSTALL INSPIRE
JDM STRUCTURES
2013-2014



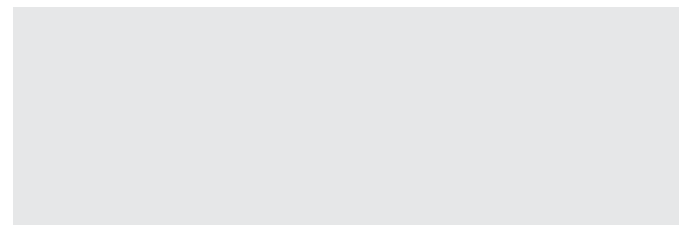
SOMERSET | SIGNATURE

Explore the many easy and affordable ways to add storage, workspace, living space ... from child-sized playhouses and a full range of storage sheds to full-size garages, animal shelters, cottages and homes.

ABOVE: 10'x16'. Craftsman-inspired windows let light stream into your barn. Bronze, Devon Cream and Oak Leaf in a custom paint scheme, Weathered Wood shingles, long stall transom doors, triple wood windows, crossbar shutters, wood vents and corbels.

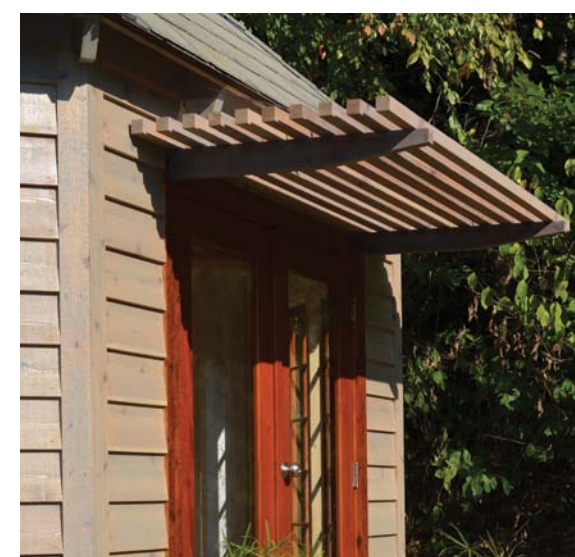
FRONT COVER: This Hudson Bay Aspen shows off a superb coppertop cupola, shown here with the optional finial, cedar shake roof, corbels and an arched brace.

PROUDLY DISTRIBUTED BY



FROM “WOW” TO “YES!”

Having your own backyard barn rewards you with extra storage while it improves your family’s personal environment. You can clear out the garage, quit renting storage, and put that neglected corner of the yard to very good use. Do this with one of our barns, and you will get better construction, top-grade materials, tasteful paints and stains, and details that set the standard for the industry. With choices that let you do it your way and a solid warranty behind it all. It’s the simple, sensible pleasure of doing more with what you have.



MARCO | CUSTOM

Marco’s 5-sided design creates a perfect special spot wherever you place it. This one is full of double charm – double doors and double windows on two sides.

ABOVE: 12’x12’. Exposed rafters, custom slate shingles, Smoke stain on cedar lap siding, double full-light Spanish cedar doors, double 20”x60” windows and awning.

LEFT: Capture the delight of filtered sunlight with an awning that can be painted or stained.

GOOD BETTER BEST

OUR "GOOD" NEW ENGLAND BEATS MANY COMPANIES' BEST! Panelized walls, floors and roofs are built with heavier lumber for truer, tighter, stronger units. The entire process is greener than traditional methods. New England barns have joists laid on edge, SmartSiding, SmartFloor, keyed latches and 6' piano hinges, all of which are at the top of their class.



SIGNATURE'S WIDE OVERHANG AND 6" FASCIA ARE JUST THE BEGINNING. These barns also come with 16" wall framing, 30-year dimensional shingles and a 20-year warranty. Step inside, and you'll appreciate the higher ceilings and the additional loft storage in some models. Signature offers many models, including several porch designs, the wonderful 5-sided Marco, the Gardener potting shed, and playhouses ideal for the world of "let's pretend."



HUDSON BAY TAKES IT ALL UP A NOTCH. All the soundness and advantages of Signature as well as six siding choices, cedar shakes and two steel roofs. Choose a handsome coppertop cupola or the extra sizes and shapes in windows and doors, including Spanish cedar raised panel doors.



OPPOSITE PAGE: Hartford | New England, 10'x14'. Khaki siding, Devon Cream trim, Rustic Red side door, Z-style shutters and window boxes. Weathered Wood shingles, double pushbar doors and cupola. Custom paint scheme.



GOOD

BETTER

BEST

5 REASONS TO CHOOSE NEW ENGLAND

LASTING QUALITY IN AN AFFORDABLE BARN WITH SMART DETAILS

PIANO HINGES. 6' long, smooth and secure

SMARTSIDE OR VINYL SIDING. Resists moisture, lasts longer

3/4" SMARTFLOOR. Bright, textured and long-lasting

PRESSURE-TREATED SKIDS. Protection from the ground up

KEYED LATCHES, galvanized screws, aluminum drip edges



STORAGE BARNS | GARAGES



HARTFORD | NEW ENGLAND

New England barns are both affordable and functional. They are designed to reflect an Atlantic Coast preference for short eaves, and they are built for structural soundness.

ABOVE: 10'x16'. Washed Juniper siding, Devon Cream trim, Juniper door, Black shingles, 28"x29" wood windows, long stall transom doors, window boxes, cupola and wood vents.

BELOW: 10'x16'. Cottonwood siding, White trim, custom color doors, Medium Gray shingles. 2'x3' aluminum windows, long stall transom doors, window boxes and wood vents. Custom paint.



DELAWARE | NEW ENGLAND

Delaware has a saltbox roof, while Hartford has a gable roof. Both are quality storage solutions at a value price.

ABOVE: 8'x10'. True Olive siding, Khaki trim and doors, Tan shingles, 28"x29" wood windows, long stall transom doors, window box, cupola.



PAINT IT! New England offers all the same paint and stain options that are available for Signature and Hudson Bay barns.



BOSTON | NEW ENGLAND

Boston's 4' walls require an end entry, while Mystic's 6'6" walls allow side or end entries. All New England barns have ¾" SmartFloors, treated for longevity and textured for safe footing.

TOP: 10'x12'. Desert Tan with Devon Cream, Weathered Wood shingles. crossbuck doors.

BELOW: 10'x12'. Flint vinyl siding, Medium Gray shingles, White fascia and trim, white wood roundtop doors.



MYSTIC | NEW ENGLAND

ABOVE: 10'x10'. Rustic Red siding, Cottonwood trim, Weathered Wood shingles, 66" long crossbuck transom door, wood vents.

LEFT: 10'x16'. Sandstone siding, Cottonwood trim and shutters, Weathered Wood shingles, Z-style shutters, braced doors.



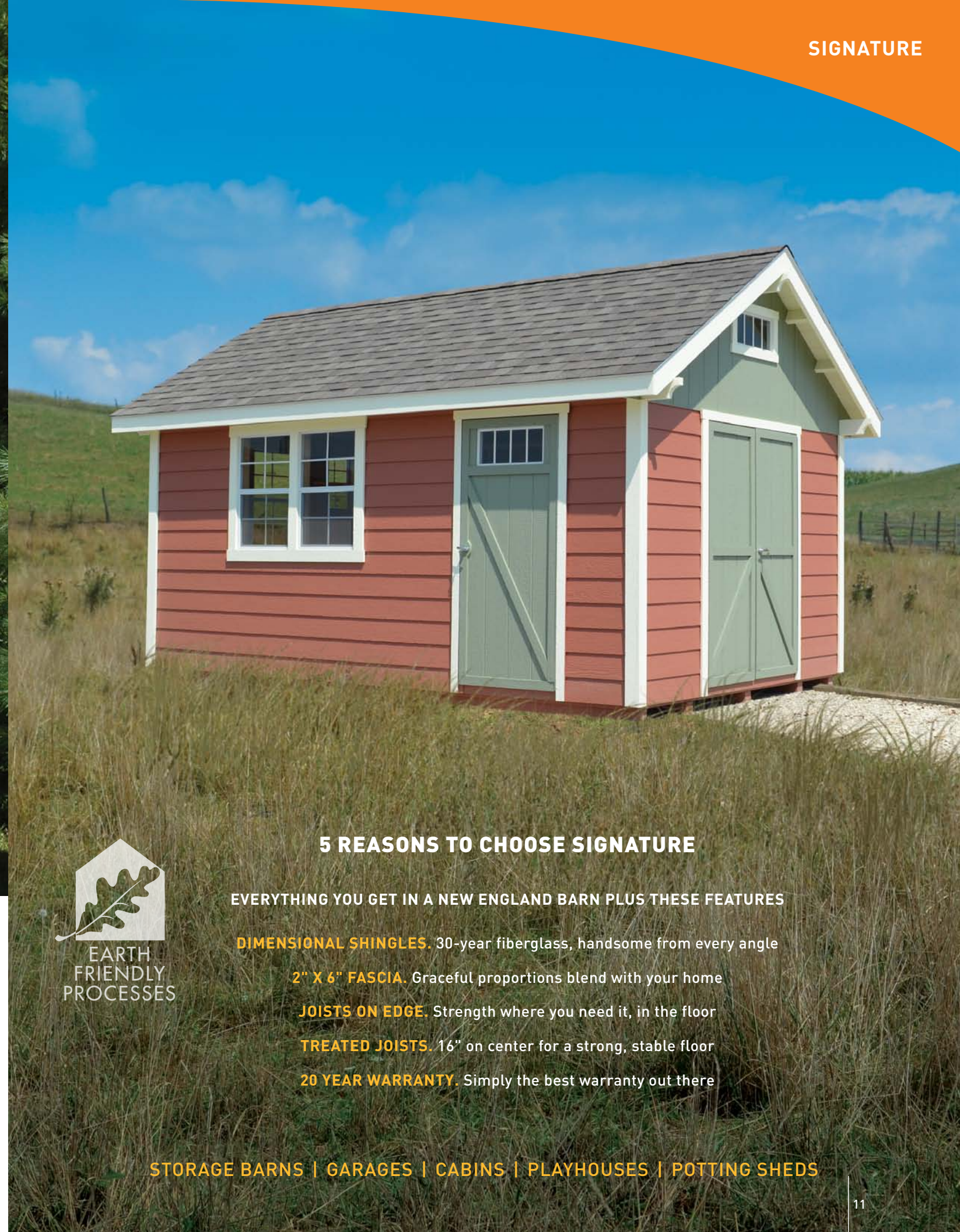


SKYLINE | SIGNATURE

This modified Skyline illustrates some of the possibilities when you build it your way.
If you want something special, just talk with us!

ABOVE: Skyline | Custom, 14'x16'. Modified Skyline with pine siding, Smoke stain, 6'6" walls, double arched doors, 12/12 roof pitch. Custom siding and shingles, large wood vent.

RIGHT: 10'x16'. Lap siding, custom paint scheme in Sedona, Devon Cream and Muted Olive. Weathered Wood shingles, 2'x3' windows, 10"x23" window, long braced transom door and corbels.



5 REASONS TO CHOOSE SIGNATURE

EVERYTHING YOU GET IN A NEW ENGLAND BARN PLUS THESE FEATURES

DIMENSIONAL SHINGLES. 30-year fiberglass, handsome from every angle

2" X 6" FASCIA. Graceful proportions blend with your home

JOISTS ON EDGE. Strength where you need it, in the floor

TREATED JOISTS. 16" on center for a strong, stable floor

20 YEAR WARRANTY. Simply the best warranty out there



STORAGE BARNs | GARAGES | CABINS | PLAYHOUSES | POTTING SHEDS



SKYLINE | SIGNATURE

ABOVE: 20'x24'. Desert Tan siding with Devon Cream trim, Weathered Wood shingles, reverse gable dormer with large wood vent, single and triple wood windows, garage door and long stall transom door.

RIGHT: 10'x16'. Maize Yellow siding, White trim and Z-style shutters. Weathered Wood shingles, medium cupola, weathervane and long braced transom doors.

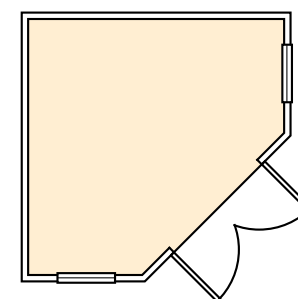


MARCO | SIGNATURE

TOP: 10'x10'. Pewter siding, Black shingles, Sandstone trim, corner boards and window boxes, White vinyl shutters, 15-light steel doors.

BOTTOM: 10'x10'. Maize Yellow siding, Medium Gray shingles, White trim and corner boards, 2'x3' single hung window and 8-light steel door. A custom bi-fold window with shelf is ideal for serving drinks and snacks poolside.

LEFT: Marco is available in 8'x8', 10'x10' and 12'x12' with optional shutters, window boxes and 15-light or full-light doors.





AURORA | SIGNATURE

Aurora's 6'6" side walls and gable roof create a flexible design allowing side and end entry doors. With many sizes, siding options and a garage package, you can't go wrong with an Aurora.

ABOVE: 10'x16'. Pine siding with Cedar stain, Brown shingles, crossbar shutters, wood windows, and side and end entry long stall transom doors.

BELOW: 10'x12'. True Olive siding, Devon Cream trim and door, Weathered Wood shingles, double 2'6"x3' windows and long braced transom door.



**AURORA IS OUR
MOST POPULAR MODEL!
SEE MORE ON PAGE 40.**

AURORA | SIGNATURE

ABOVE: 10'x16'. Lap siding with Bronze, Devon Cream and Oak Leaf in a custom paint scheme. Brown shingles, long stall transom doors, triple wood windows, crossbar shutters, corbels and awning.



ONTARIO | SIGNATURE

Ontario and Windsor have 2"x10" top plates.

Ontario's 6'6" sides can have end and/or side doors.



ABOVE: 12'x16'. Muted Olive siding, Weathered Wood shingles, Devon Cream trim, long stall transom doors, 2'6"x3' aluminum windows, crossbar shutters, large cupola.

RIGHT: 16'x28'. Sandstone siding, Weathered Wood shingles, Cottonwood trim, transom garage doors with decorative strap hinges.



WINDSOR | SIGNATURE

Classic gambrel-roofed barns are available in many sizes, from an 8'x8' Windsor to a 24'x40' Ontario. 10' and 12' wide buildings have 2' lofts; 14', 16' and 20' wide buildings have 4' lofts. 24' wide buildings have a full loft and pull-down stairs.

ABOVE: 10'x12'. Pinecone siding, Black shingles, Sandstone trim, stall doors.



SCIOTO | SIGNATURE

Skids running front to back and hefty 6"x6" posts make Scioto a substantial barn. The volume ceiling and 4' loft create an ideal workshop with ample storage room.

ABOVE: 20'x20'. True Olive siding, Khaki trim and doors, Cedar stain porch deck and posts, Tan shingles. 2'6"x3' and 2'x3' aluminum windows, Z-style shutters, wood window, cupola, long braced transom doors.



BROOKSIDE | SIGNATURE

Flower-power settings deserve a focal point, and gardeners need a barn with generous space for organizing tools and a shady porch to sit and admire their work.

ABOVE: 10'x16'. White with Bronze stain on the porch deck and post, long braced transom doors (single on the porch, double doors on the end), wood windows, crossbar shutters, flower boxes, Galvanized steel roof.

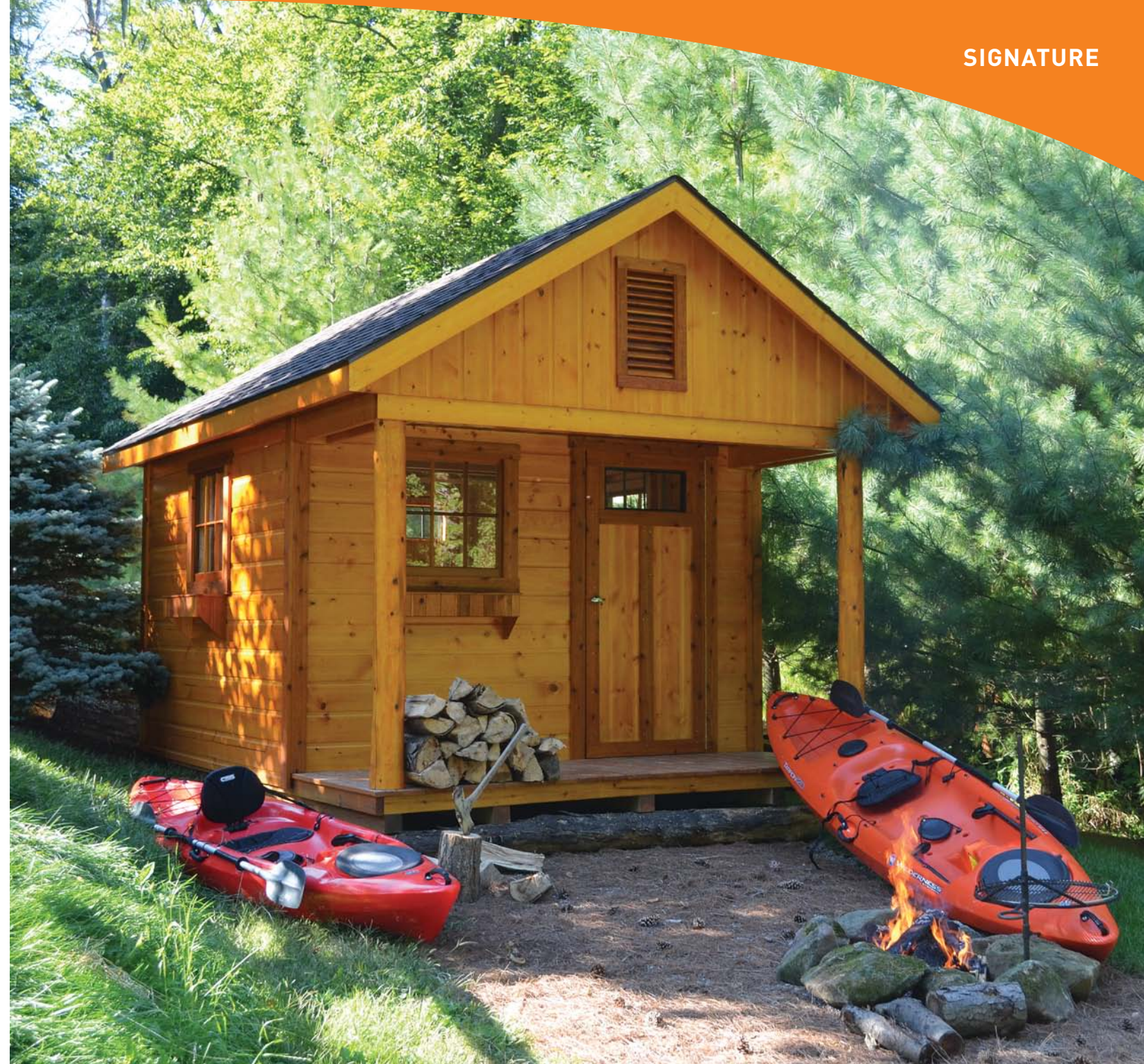
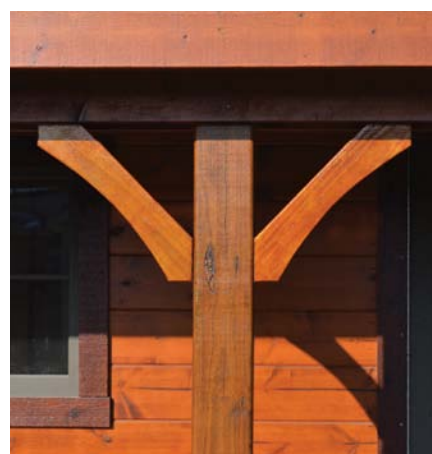


LEXINGTON | SIGNATURE

If a porch is in your plans, consider Scioto, Lexington, Brookside or Horizon. Think spacious workshop or casual backyard retreat, available in a wide range of sizes.

ABOVE: 14'x16'. Pine siding with Bronze stain, Pinecone trim and doors, Cedar stain porch posts and deck, Standing seam Galvanized steel roof and wood windows.

RIGHT: **ARCHED TIMBER BRACE.** Add a distinctive touch to porch posts with our optional Arched Timber Brace.



HORIZON | SIGNATURE

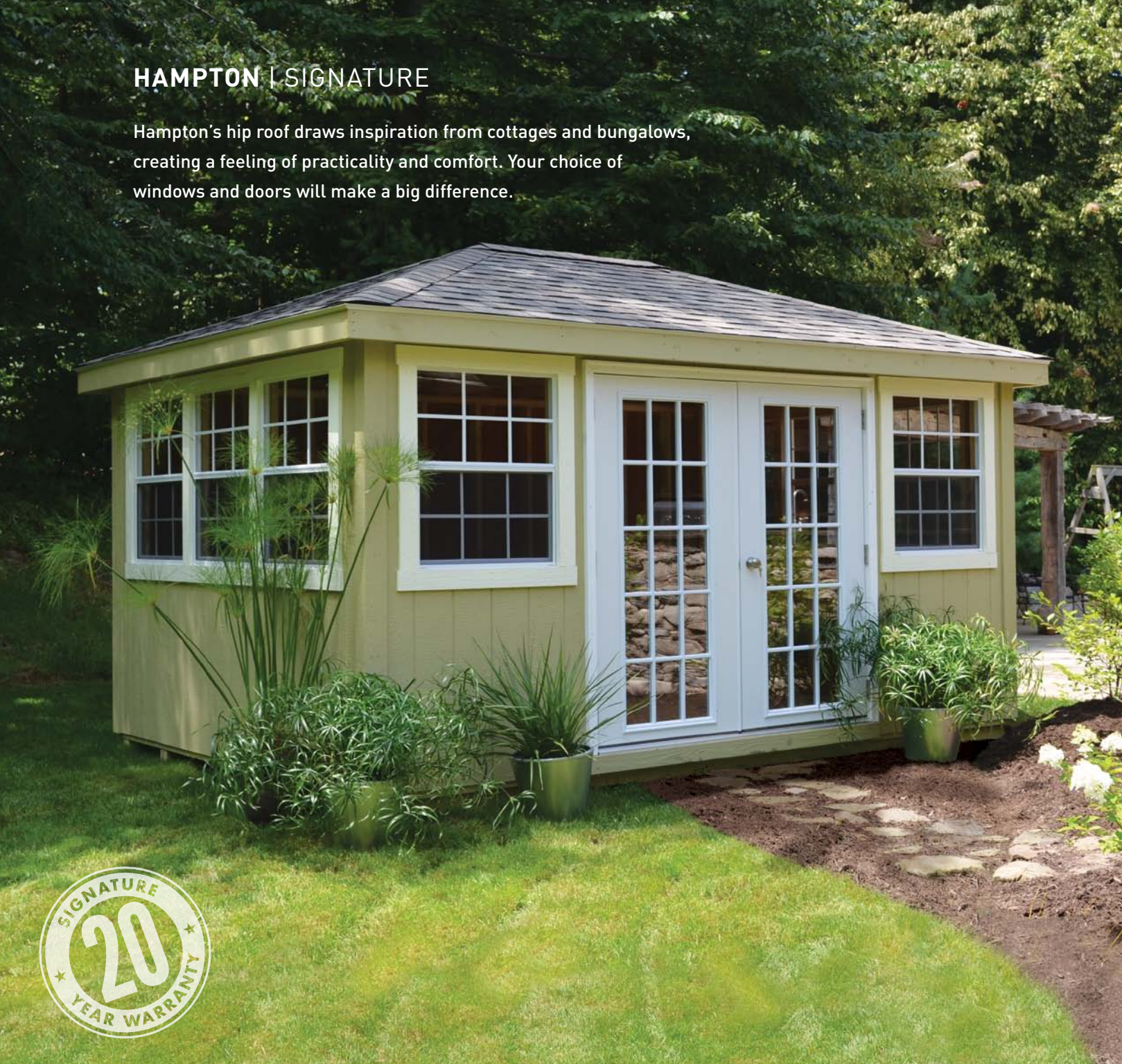
ABOVE: 10'x14'. Pine cove siding, Cedar stain and Brown shingles. Long stall transom door (not shown: double doors on back), wood windows, flower boxes, large wood vents, hand-peeled cedar posts.

LEFT: Round, hand-peeled porch posts are a fitting touch in rustic settings.



HAMPTON | SIGNATURE

Hampton's hip roof draws inspiration from cottages and bungalows, creating a feeling of practicality and comfort. Your choice of windows and doors will make a big difference.



ABOVE: 10'x14'. Fern Green siding, Devon Cream trim, Weathered Wood shingles, 2'6"x3' aluminum windows, 15-light double doors.

RIGHT: Hampton | Custom, 14'x24'. Modified Hampton with custom stucco and stone siding, Black shingles, Pinecone pushbar transom doors, double 2'x3' vinyl windows, Taupe garage door, 8/12 roof pitch.



SPRINGFIELD | SIGNATURE

Springfield shares Aurora's classic design and many available sizes, the only difference being the saltbox roof, perfect for matching your house or adding a classic shed roofline.

ABOVE: 10'x14'. Cream vinyl siding, Weathered Wood shingles, White soffit & fascia, 2'x3' aluminum window, White vinyl shutters, 9-light doors.



ABOVE: 8'x12' CLUBHOUSE. Custom paints and paint scheme, Tan shingles, finished porch deck.

RIGHT: 8'x10' VICTORIAN. Perfect Pink siding, Medium Gray shingles, White trim. Shown with optional unfinished porch deck and White fancy railing, also available with Castle playhouse.

Perfect Pink is a standard siding paint on Kidzspace playhouses, and corner boards are painted as trim.



KIDZSPACE | SIGNATURE

Your child will be the envy of the neighborhood, especially with a loft and ladder to add to the fun. Safety features include child-safe glass and adult door. Windows are a charmingly small 14"x21". Built to Signature standards with three 4"x4" pressure-treated skids, 2"x4" wall framing 16" on center, a continuous shingle ridge vent, trusses 24" on center and a 20-year warranty.

ABOVE: 8'x10' VICTORIAN. Sedona siding, Adobe trim, Weathered Wood shingles, stall door.

BELOW: 8'x10' CASTLE. Desert Tan siding, Tan shingles, Spun Gold trim.



GARDENER | SIGNATURE

Translucent roofing runs down the long side of the saltbox roof to capture the sun's warmth and light. Window boxes and plant shelves are included as standard features.

ABOVE: 8'x10'. Fern Green siding, Devon Cream trim and corner boards, Weathered Wood shingles, long braced door with transom, cupola.

RIGHT: Montreal | Hudson Bay, 10'x16'. SmartSide in Spun Gold with Devon Cream trim and shutters. Cedar shakes with clear sealer, cedar shakes in the gable ends. Two 20"x60" windows with 59" louvered shutters, 60"x72" Spanish Cedar doors, 9 lights. Plant shelves with Bronze stain.



5 REASONS TO CHOOSE HUDSON BAY

EVERYTHING YOU GET IN A SIGNATURE BARN PLUS MORE CHOICES IN

SIDING. Six options with a full range of paints and stains

DETAILS. Exposed rafters, fancy cupolas, lattice awnings, functional dormers

ROOFING. Cedar shakes, dimensional shingles, two types of steel roofing

DOORS. Raised panels, Spanish cedar, more glass options

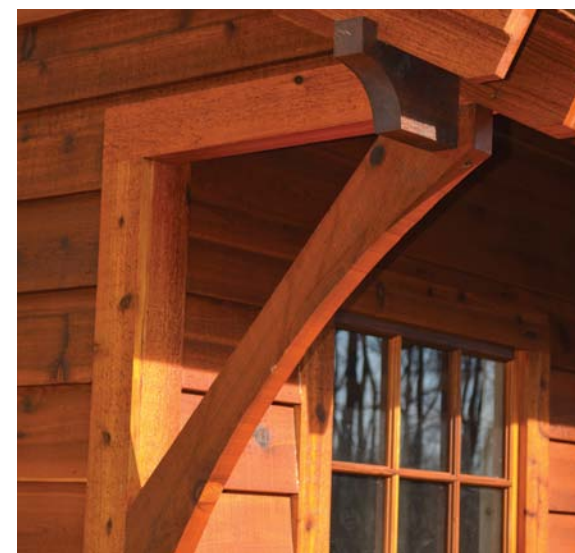
WINDOWS. More sizes, shapes and combinations, long shutters



STORAGE BARNs | CABINS | POTTING SHEDS

BOLD NEW DESIGNS

Hudson Bay brings you “near-custom” barns – top quality materials, more choices in siding, roofing and windows, as well as exposed rafters and beautifully hand-crafted cedar doors. Among the many exciting options is an exquisite coppertop cupola, available with or without a copper finial. With Hudson Bay, you can raise the bar and leave “ordinary” nowhere to be found.

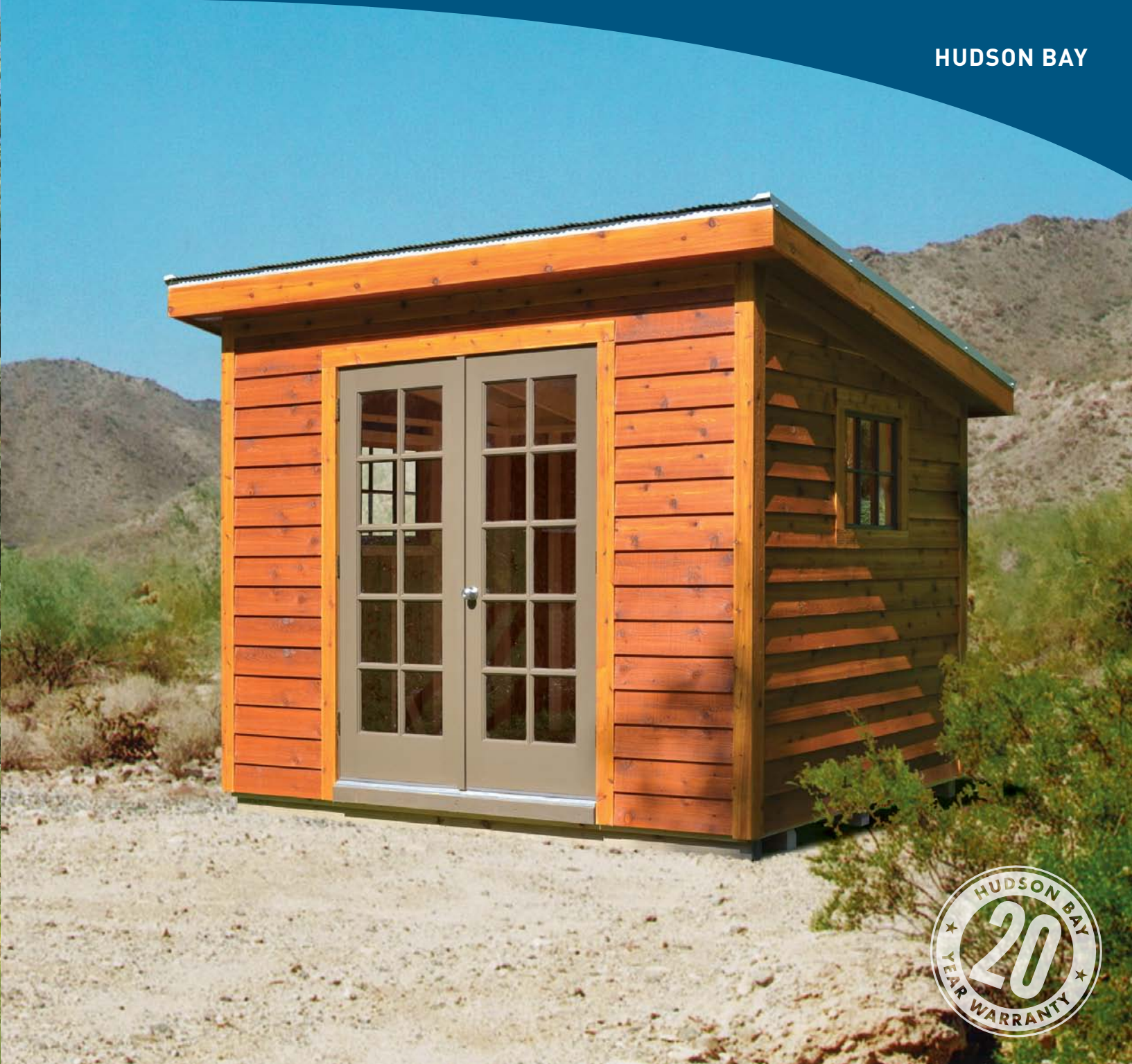


ASPEN | HUDSON BAY

A rugged design with extended eaves, exposed rafters and side and end doors, Aspen is ideal by the back fence or at the base camp.

ABOVE: 10'x14'. Cedar lap siding in Cedar stain, cedar shakes with clear sealer. 36"x72" Spanish cedar 9-light single door, 60"x72" Spanish cedar 4-panel double doors, 28"x29" wood windows. Coppertop cupola with Cedar stain and louvers.

LEFT: Arched Brace with the shape and detail to please the eye forever.



GENEVA | HUDSON BAY

Geneva is one of Hudson Bay's bold new designs, built with top quality materials and more options in windows, doors, siding and roofing, as well as exciting details like exposed rafters and long shutters.

ABOVE: 10'x12'. SmartSide siding in True Olive with Khaki window frames, doors and shutters. Cedar shakes with clear sealer. 60"x72" Spanish cedar doors with 9 lights, 71" louvered shutters. Triple 28"x29" wood windows. Finial and coppertop cupola.

RIGHT: Coppertop cupolas are available with or without a copper finial and with sides in louvered wood or mullioned glass.



DANA | HUDSON BAY

From urban streets to farms, ranches and suburbs, Dana provides plentiful storage in an unassuming shed roof design. It fits in easily, even in tight spots.

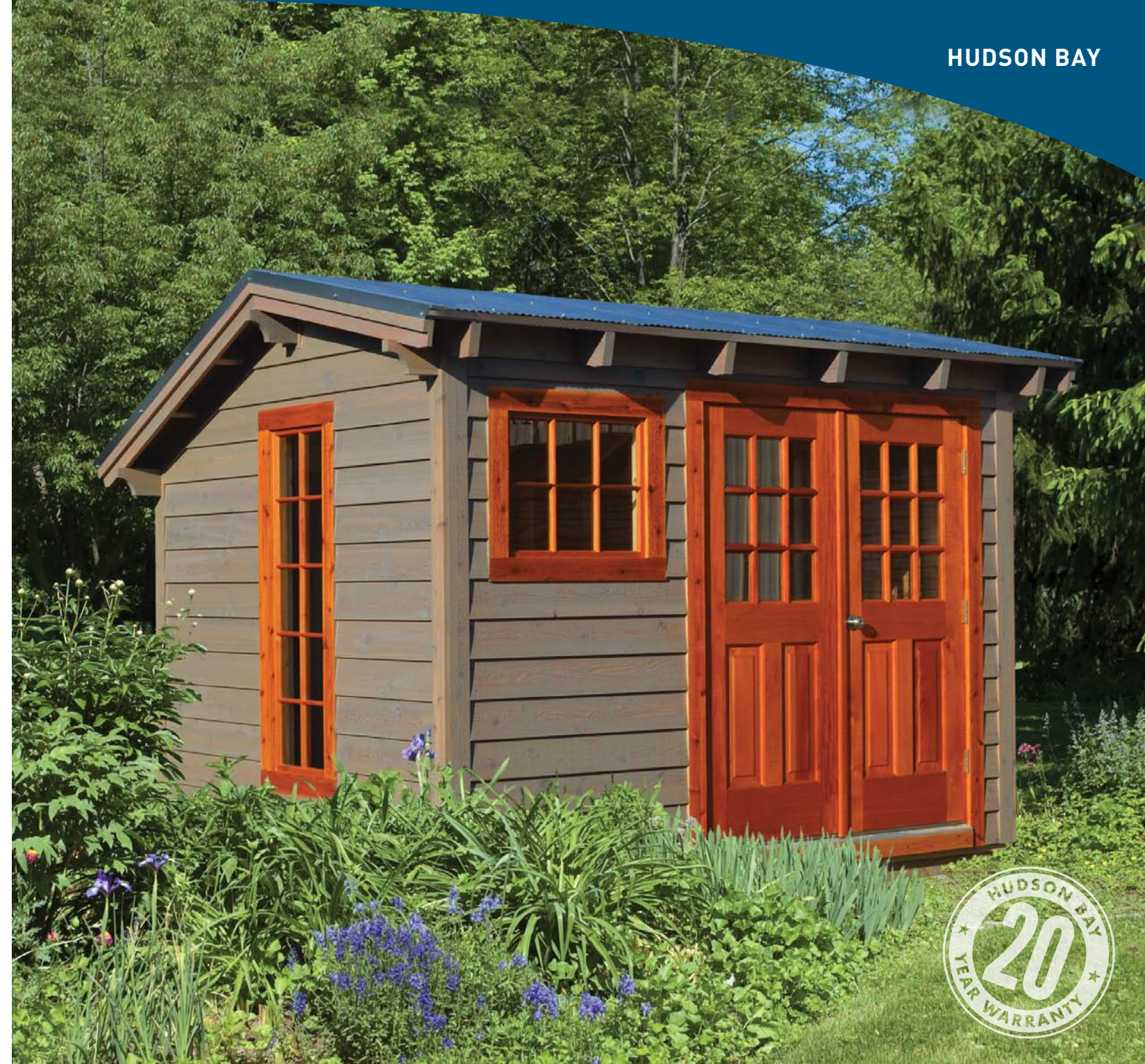
ABOVE: 8'x10'. Cedar lap siding in Bronze stain with trim in Oak stain, windows and doors in Pinecone. Corrugated steel roof. 60"x80" Spanish cedar doors with ten lights, two 28"x29" windows.



CORTLAND | HUDSON BAY

This classic square design yields a pleasing symmetry and a dramatic one-point roof. We have added 8-light Spanish cedar doors that let in plenty of light.

ABOVE: 10'x10'. Pine cove siding in White paint. Standing seam steel roof in Gavalume. 60"x72" Spanish cedar doors with 8 lights. Two 20"x36" windows.



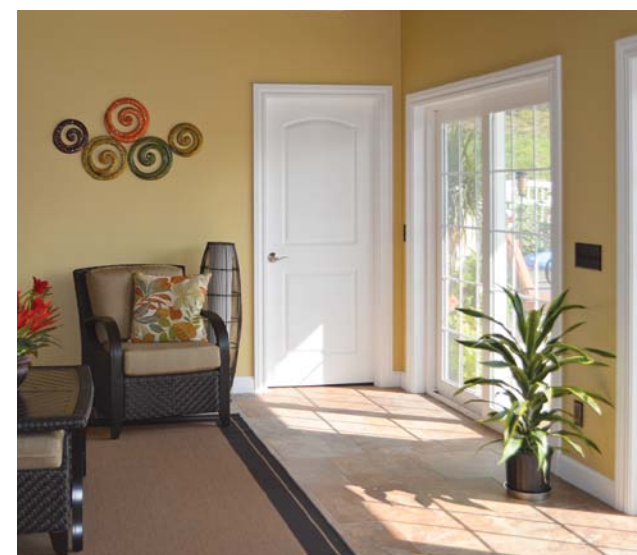
OLYMPIA | HUDSON BAY

Olympia's exposed end rafters and four sources of natural light make this design pleasing inside and out. A snug retreat for writing or painting?

ABOVE: 8'x10'. Cedar lap siding in Smoke stain, window frames and doors in Cedar stain. Corrugated steel roof. 60"x72" Spanish cedar doors with 9 lights. One 28"x29" wood window and two 20"x60" wood windows.

THE SKY'S THE LIMIT

Multi-purpose pool houses, stunning contemporary studios, rustic retreats...whatever you need, we can build it. Our efficient methods give you more for your money and all the significant advantages of our eco-friendly processes, fast installation and strong, stable panelized walls. Let us advise you about whether to adapt one of our many structures or begin with a custom architectural plan. Whether you want one inventive touch or a fully custom structure, the many possibilities are limitless.



CUSTOM | STRUCTURES

This pool house has stone and stucco siding, sliding glass doors and a beautifully finished interior with tile flooring, a full kitchen for entertaining and changing rooms for guests.

ABOVE: 20'x48'. Very modified Lexington with custom roof pitches, stucco and stone siding, functional dormer, Weathered Wood shingles and many custom details.

LEFT: Cathedral ceiling, loft with bedrooms and en suite bathrooms, smooth wallboard interiors, ceramic floor tile and triple 6' sliding glass doors.

CUSTOM-BUILT GARAGES

Have it your way with a custom garage built to suit your needs. This makes ordering a garage in the style you want and your exact dimensions not only possible but also easy.



ANIMAL SHELTERS

Hartford, Mystic and Aurora are good choices for converting to a horse barn. Choose one or two horse stalls and tack rooms from 10'x6' to 12'x10'. Keep chickens dry and safe in a beautiful coop.

AURORA HORSE BARN | ABOVE: 10'x16'. Modified Aurora with pine cove siding in Cedar stain and Rustic Red steel roof. 6' high divider wall, 4' high kickboard, 8' wide red gate. The perimeter is reinforced for delivery without flooring. Dutch doors are available.

WHEELBARROW CHICKEN COOP | LEFT, TOP: 3'x4'. Perfect for a mini-flock of 2 or 3 chickens and the easiest possible way to give them a new place to hunt and peck. Just roll the whole coop to fresh grass. White siding and trim, Medium Gray shingles.

GABLE-STYLE CHICKEN COOP | LEFT, BOTTOM: 6'x6'. House 6-8 chickens in style! True Olive with Khaki trim and Tan shingles. Custom length ramp.

QUALITY MATERIALS

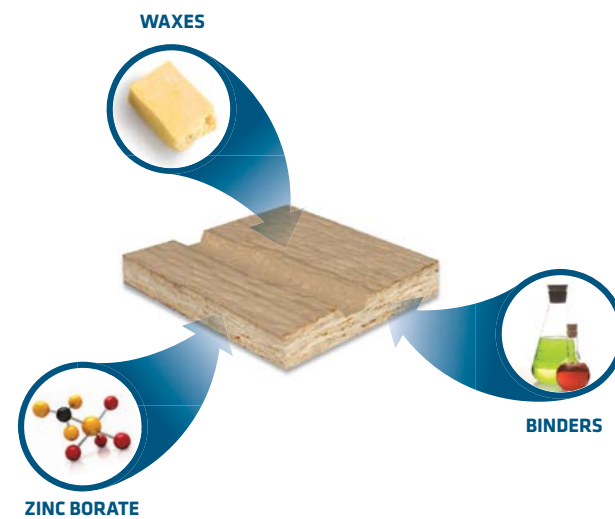
LP® SmartSide® Precision Series panels are now standard. The exterior is engineered to last longer, and the interior has SmartFinish®, a smooth overlay that makes interiors much more attractive.

RESISTS MOISTURE, INSECTS AND FUNGUS. SmartSide is engineered with advanced binders, wax and SmartGuard – a proprietary zinc borate – to resist moisture, fungal decay and termites.

PREMIUM INTERIOR WALLS. SmartFinish gives our barns a premium interior appearance. Its durable overlay replaces the unattractive graining and tonal variation of plywood.

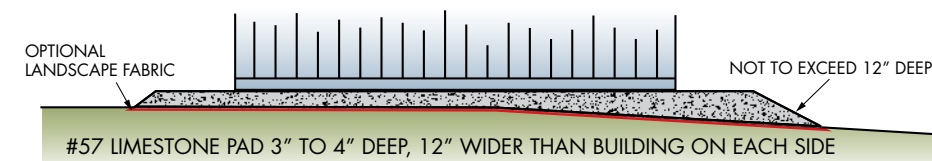
5/50/20 WARRANTY. LP provides a 5-year, 100% labor and replacement feature for SmartSide and a 50-year pro-rated, limited warranty on the substrate. LP’s SmartFloor has a 5-year limited warranty. This is in addition to our own 20-year warranty for Signature and Hudson Bay.

SMARTFLOOR. Like SmartSide siding, LP’s SmartFloor is treated with SmartGuard® to help prevent fungal decay and termite damage. SmartFloor is textured and fits together beautifully.



HOW TO PREPARE YOUR SITE

A 3”- 4” #57 limestone pad that is 24” larger than barn dimensions (12” for each side) is recommended. Customer is responsible for site preparation, building or zoning permits and any caulking. Inquire at your dealer for other ways to prepare a site.



QUALITY CONSTRUCTION

Our barns are designed to coordinate or complement all housing styles. We choose materials with care, use a clean, green panelization process and rely at every step on the skill of our craftsmen.

BETTER ROOFS. Instead of ordinary plywood roof sheathing above the truss, we use today’s improved OSB. It stays flatter and has embedded resin for greater moisture resistance. On select models, roof trusses are strengthened with 2”x4” bottom cords connected by metal truss plates.

TIGHTER WALLS. We start with bright lumber, straighter and cleaner than in many houses. Our unique panelizing process builds straighter, stronger walls that fit together tightly. We use lumber efficiently, so more goes into your building and less is scrap. What little scrap there is, is recycled.

STRONGER FLOORS. In barns up to 12’ wide, we set floor joists on edge, multiplying their strength and stability. It takes more lumber and time, but the advantage is irreplaceable – it would be hard to replace the beams under a floor. Do it right to begin with, we think.



OSB roof sheathing
2”x4” bottom cord
Metal truss plate



Panelization wastes less lumber; creates stronger, straighter, tighter walls; and goes together quickly with less site disturbance. Overall, it’s a better process than stick building.

ANY MODEL, SO MANY WAYS

These barns – all Aurora models – have entirely different looks that hint at the many ways to make your barn all yours!



This row show two pairs of long braced transom doors and standard pushbar doors. All three barns have Z-style shutters, and the center barn has a cupola.



Shown here is (l-r) stucco siding vs. vinyl siding vs. pine cove siding. On the left is a pushbar transom door, at the center are 15-light steel doors, and on the right double crossback transom doors. In this row, the windows are paired, compared to single windows in the top row.



On the left is an Aurora with the garage option and a single roundtop side door. The barns in the center and on the right have side doors placed symmetrically between windows, wood vs. vinyl shutters, and a window vs. double doors on the end. Note white fascia and corner boards on the barn on the right.

6 EASY STEPS

1 CHOOSE A MODEL AND SERIES.
From quietly useful to totally spectacular.

3 CHOOSE OPTIONS. From practical to decorative. Page 44.



5 CHOOSE DOORS. How many doors? Single or double? Which style? It's all on page 46.



2 CHOOSE SIDING AND ROOF MATERIALS. 2 siding choices in New England, 4 in Signature, 6 in Hudson Bay. Steel or shingle roofs.



4 CHOOSE WINDOWS. And consider shutters and window boxes. See page 45 and the Hudson Bay pages for more window options.



6 CHOOSE A FINISH. Paints and stains are on page 47 along with an example of the standard paint scheme.



Ask about a Rent-to-Own payment plan. Prepare your site and arrange for delivery. That's all there is to it!



MODEL & SERIES

New England, Signature, Hudson Bay and custom
Most models are available in a wide variety of sizes.

FASCIA. The 6" fascia on Signature barns sets them apart from New England barns. In Hudson Bay barns, the fascia is highlighted with extended rafters.

ROOFLINE. Match the roofline of your barn to your house or go for a big contrast.

ROOF PITCH. Aurora's 5/12, Skyline's 8/12 and the 12/12 pitch on some of our custom barns changes their outside appearance and inside volume. The pitch can increase on Hampton Custom, too.

PORCH OR NO PORCH? Our standard porch posts are 6"x6", and the hand-peeled log post option has a strong, rustic appeal.

STANDARD FEATURES. The list on page 48 shows what comes with barns in each series. It also shows what key construction features are always standard.



GAMBREL
BOSTON
MYSTIC
ONTARIO
SCIOTO
WINDSOR



SALTBOX
DELAWARE
GARDENER
SPRINGFIELD
OLYMPIA



SINGLE POINT
MARCO
CORTLAND



HIP
HAMPTON



SHED
DANA



GABLE
SEE MODELS
BELOW



**4/12
ROOF PITCH**
HARTFORD



**5/12
ROOF PITCH**
AURORA
BROOKSIDE
LEXINGTON
GENEVA



**7/12 OR 8/12
ROOF PITCH**
SKYLINE
HORIZON
ASPEN
MONTREAL
SOMERSET



SIDING & ROOFS



WHAT TO LOOK FOR IN SIDING

Our pine cove and lap siding are superior to most pine barn siding because they are designed to direct rainwater away via a clear drip path. This prevents wicking to the inside – a problem that can cause rot. You should watch for this in barns made elsewhere.

ABOVE: 10'x10'. Skyline with Storm Blue LP Lap siding, Bronze stain trim, Weathered Wood shingles, wood windows, flower boxes, pushbar doors, decorative hinges, large wood vent, cupola.



SMARTSIDE



8" PINE COVE

6" LP LAP

DOUBLE 4" DUTCHLAP VINYL



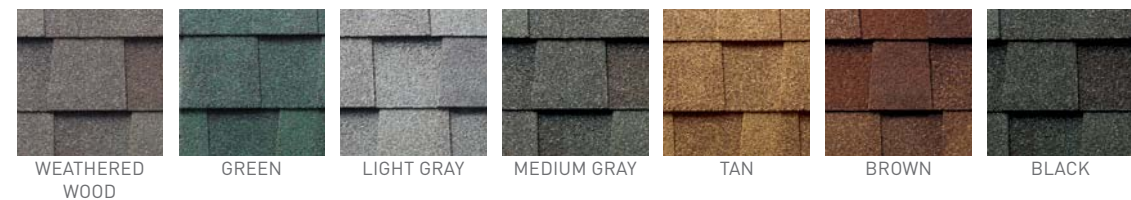
Hudson Bay offers two more sidings.

VINYL SIDING



SHINGLES

shown as dimensional shingles



STEEL ROOFS

29 gauge. See your dealer for options in Hudson Bay corrugated or standing seam.



OPTIONS

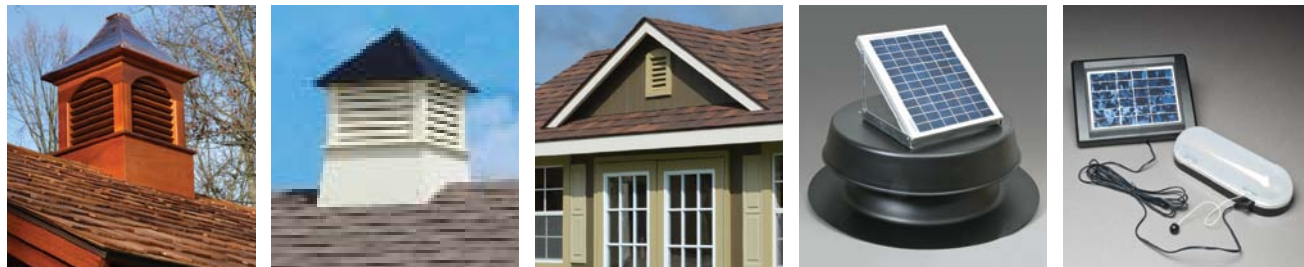
WEATHERVANES, CORBELS AND AWNINGS

Weather vanes available only on cupolas. See awnings on pages 3 and 15.

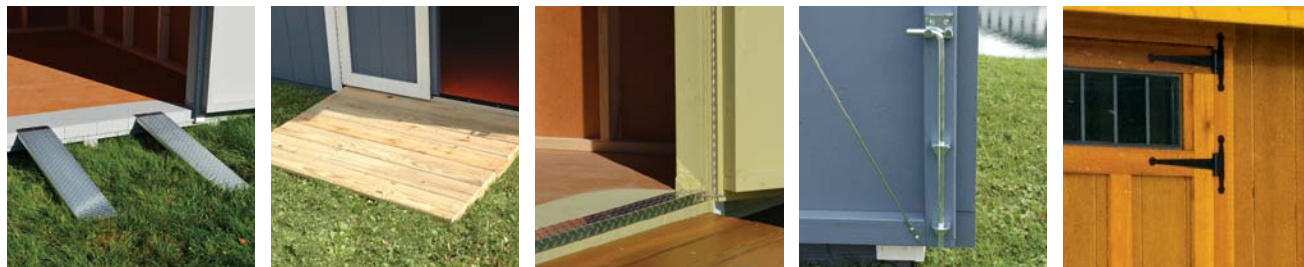


Carriage Weathervane Rooster Weathervane Eagle Weathervane Horse Weathervane Corbels

OPTIONS



Coppertop cedar cupolas in glass or louvers Cupolas, medium or large in unfinished, treated wood Reverse Gable Dormer Solar Roof Fan/Vent Mini-Solar Light



Portable Metal Ramps Treated Ramps 54" or 66" wide Aluminum Threshold Plates (Standard with garage doors) Drop Rods make it easy to prop a door open. Decorative Strap Hinges

THE SILVERTECH OPTION

SilverTech reduces solar heat gain significantly and installs just like regular roof sheathing. It was the first radiant barrier panel on the market ten years ago and is still the most popular.



FACTORY-BUILT GARAGE OPTION

AVAILABLE IN HARTFORD, MYSTIC AND AURORA

8'x6'4" insulated garage door with aluminum tread plate threshold
Plank flooring, treated, 2"x8" tongue & groove
4"x6" skids, single door

Please note: Slightly shorter overhang and lower peak; 12' barns are slightly undersized. These minor changes make garages road-ready.

GARAGE DOORS ARE AVAILABLE IN THESE HUES:



WHITE ALMOND TAUPE BROWN

WINDOWS

WINDOWS

Aluminum windows available in white or dark brown. Additional wood window sizes available in Hudson Bay.



Aluminum 2'x3' single hung with grills Aluminum 2'6"x3' single hung with grills Wood Window, 28"x29"

SHUTTERS AND WINDOW BOXES

Additional louvered shutter sizes available in Hudson Bay.



Wood Crossbar Wood Z-style Vinyl Shutters



Cedar Window Box, 24" or 30"

VINYL SHUTTERS



WHITE CLAY WEATHERWOOD CEDAR REDWOOD MAROON GREEN BLACK

FACTORY-BUILT MYSTIC GARAGE

Garage door, single side door and 4"x6" skids are standard. So is plank flooring, a better surface for tires than concrete or gravel, especially for antique cars.



A FACTORY-BUILT GARAGE CAN BE INSTALLED IN ONE DAY!

CHOOSE A DOOR



PAINTS & STAINS

STANDARD PAINTS

White also available.



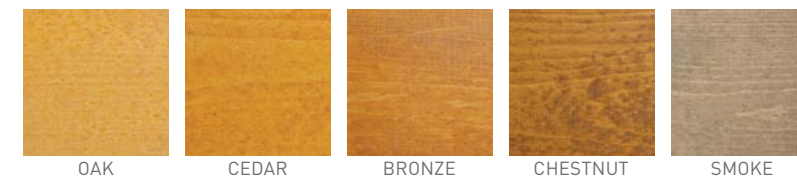
PREMIUM PAINTS

Premium paints are available on trim at no extra charge. Using one for siding costs a little more. Black also available.



STAINS

Stains can be used on Duratemp, pine or cedar.



Printing does not allow for absolutely accurate siding, shingle or trim hues. See your dealer for actual samples. Barns built at your site come primed. Barns built at our factory have the option of being painted as shown below.



STANDARD PAINT SCHEME SHOWN

- A Siding
- B Corner boards
- C Door panels
- D Fascia
- E Soffit
- F Gable ends – splice and above
- G Corbels
- H Door trim
- I Trim around doors (on barn)
- J Wood vents
- K Window trim
- L Wood shutters
- M Wood flower boxes
- N Cupola
- O Awning (not shown)

	Hudson Bay Series - page 27	Signature Series - page 11	New England Series - page 5
Wood Doors*	60" Solid 4-panel Spanish cedar doors, (72" or 80" H, depending on side wall height) with satin nickel lockset.	6' H, 2"x3" frame, adjustable steel brace Single door: 33" W, double door: 54" W	6' H, 2"x3" frame, adjustable steel brace Single door: 33" W, double door: 54" W
Fiberglass Doors		6' H fiberglass with imprinted panels. Single door: 34" W, double door: 60" W	
Single Door		6' W barns plus Brookside & Gardener	6' W barns
Double Door	8', 10' and 12' W	8' W and wider barns except Gardener	8', 10' and 12' W barns
Siding	SmartSide®, 6" LP lap siding, 6" cedar lap siding, 5" straight vinyl siding with white Azek® trim, 8" Pine cove siding or vinyl shake siding with white Azek® trim	SmartSide®, Double 4" dutchlap vinyl siding, 6" LP lap siding, or 8" Pine cove	SmartSide® or Double 4" dutchlap vinyl siding
Vents	Wood vents, round vents or ridge vent	Two small wood vents (one for 6' wide barns)	Two 8" x 16" aluminum vents (one for 6' wide barns)
Pressure treated skids	4" x 4" skids: 8' W (4), 10' W (5), 12' W (5)	4" x 4" skids: 6' W (3), 8' W (4), 10' W (5), 12' W (5), 14' W (6), 16' W (7)	4" x 4" skids: 6' W (3), 8' W (3), 10' W (5), 12' W (5)
Floor joists	2" x 4" treated joists, on edge, 16" on center	2" x 4" treated joists, 16" on center, up to 12' on edge (14' wide & larger, flat)	2" x 4" joists, on edge, 16" on center
Flooring	¾" LP SmartFloor or ¾" premium grade pressure-treated plywood	¾" LP SmartFloor or ¾" premium grade pressure-treated plywood	¾" LP SmartFloor
Wall framing	2" x 4" wall framing, 16" on center	2" x 4" wall framing, 16" on center	2" x 4" wall framing, 24" on center
Trusses	Open truss or rafter design (cathedral ceiling), 24" on center	24" on center	24" on center
Fascia	6" fascia and/or exposed rafter tails	6"	4"
Roof shingles	30-year dimensional fiberglass shingles	30-year dimensional fiberglass	25-year 3-tab fiberglass
Aluminum piano hinge	N/A	6' continuous	6' continuous
Warranty	20-year	20-year, top to bottom	5-year, top to bottom

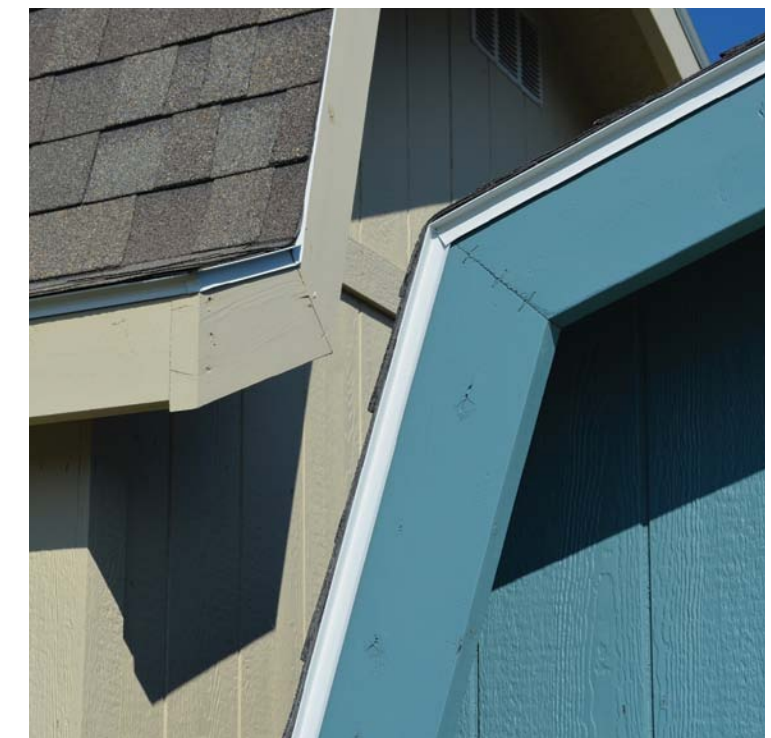
Standard on all buildings

- 7/16" OSB roof sheathing
- Aluminum drip edge on all roof edges
- Keyed door latch

Standard vinyl siding features

- Continuous shingle ridge vent (no end vents)
- Choice of siding/trim/shutter hues (Corner trim is the same as the siding.)
- White or almond for soffit and fascia
- Aluminum threshold plates
- Signature Series: Solid panel fiberglass door
- New England Series: Pushbar wood door with a standard paint
- Hudson Bay Series: Spanish cedar solid 4-panel

*Wood windows and doors under original manufacturer's warranty only.



You can see the difference in these outstanding features that come standard with your new barn. Few other barn builders include details like this or even have them available at extra charge.

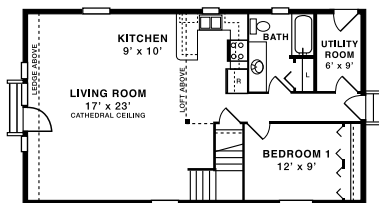
LEFT: 6' aluminum piano hinges are non-rusting and add strength and smooth action.

BELOW LEFT: Keyed latches are standard on all buildings. So are galvanized screws for door trim (vs. nails).

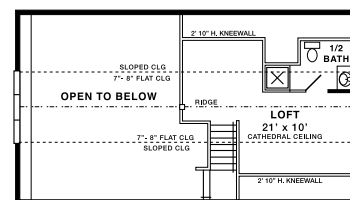
RIGHT: We've got you covered with industry-leading warranties: our own 20-year warranty on Signature, Hudson Bay and Custom as well as a limited 5/50 year warranty from LP.

BELOW RIGHT: Dimensional shingles and 2"x6" fascia are shown here on two barns. Both features come standard in our Signature and Hudson Bay barns.

In two days or less, your new cabin or cottage can be constructed on your site. Walls and roof are prefabricated at our plant and assembled on site, adding precision, reducing cost and slashing on-site time.



FIRST FLOOR



SECOND FLOOR

SIZES: 20'x24', 20'x36', 24'x30', 24'x36', 24'x40' [24'x40' shown]

STANDARD COTTAGE FEATURES (ROUGH-IN ONLY)

- Lofts: Single or double lofts with stairs
- SmartSide siding
- 30-year, dimensional fiberglass shingles
- 6' sliding glass patio door with screen
- ¾" tongue & groove LP TopNotch® subfloors
- Rough sawn trim
- 2"x10" floor joists, 16" on center, or engineered wood I-joist system
- 2"x4" wall framing, 16" on center
- 2"x10" rafters, 2' on center
- 7/16" OSB roof sheathing
- 15 lb. tar paper
- Continuous shingle ridge vent
- ½ bath upstairs (not available in 20' width)
- One 3' door with top half glass
- Single-hung windows:
- Four 3'4"x4'4"
- Three 3'4"x5' in loft (2 in 20' widths)
- Two 2'x3' (bath and kitchen)
- Built on your concrete slab or block foundation (full basement or crawl space)

OPTIONS

- 2"x6" walls
- Attached garage
- Decks
- 4'x10' balcony with 3' glass door
- Floor plan alterations
- Enclosed bedroom upstairs
- Custom windows, doors, skylights
- Visor roof
- Gable decor
- Vinyl or Cedar siding
- Stone or cast stone wainscot
- Steel roof

FULLY CUSTOM HOMES

Now there's a better and more affordable way to create the home of your dreams. We begin by developing a custom design to fit your lifestyle, build factory-perfect components, and hand-select the finest materials. Panelizing ensures a tighter, stronger building and allows us to erect the building quickly with minimal disturbance to the site. Our efficiency, craftsmanship and Builder's Warranty make a panelized structure the right answer for so many families. Ask today about a private consultation, so we can discuss how easy it is for your new home to take shape.

